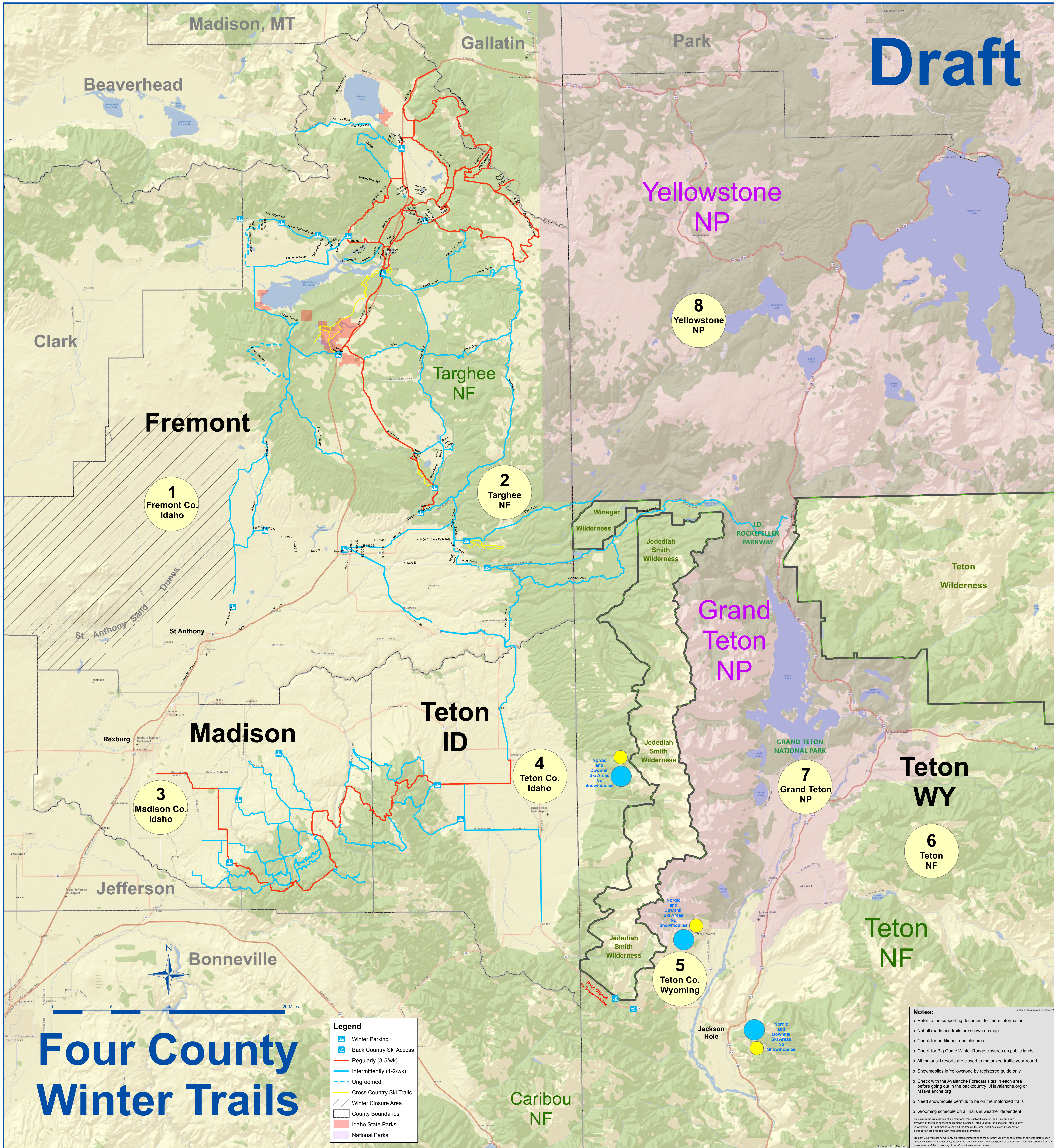


Draft



Madison, MT

Gallatin

Park

Beaverhead

Yellowstone NP

8
Yellowstone NP

Clark

Fremont

Targhee NF

2
Targhee NF

1
Fremont Co. Idaho

St Anthony Sand Dunes

St Anthony

Winegar Wilderness

Jedediah Smith Wilderness

J.D. ROCKEFELLER PARKWAY

Teton Wilderness

Grand Teton NP

Teton ID

4
Teton Co. Idaho

Madison

3
Madison Co. Idaho

Nordic and Downhill Ski Areas No Snowmobiles

7
Grand Teton NP

Teton WY

6
Teton NF

Jefferson

Bonneville

Nordic and Downhill Ski Areas No Snowmobiles

5
Teton Co. Wyoming

Nordic and Downhill Ski Areas No Snowmobiles

Teton NF

Jackson Hole

Nordic and Downhill Ski Areas No Snowmobiles

Four County Winter Trails

- Legend**
- Winter Parking
 - Back Country Ski Access
 - Regularly (3-5/wk)
 - Intermittently (1-2/wk)
 - Ungroomed
 - Cross Country Ski Trails
 - Winter Closure Area
 - County Boundaries
 - Idaho State Parks
 - National Parks

Notes:

- o Refer to the supporting document for more information
- o Not all roads and trails are shown on map
- o Check for additional road closures
- o Check for Big Game Winter Range closures on public lands
- o All major ski resorts are closed to motorized traffic year-round
- o Snowmobiles in Yellowstone by registered guide only
- o Check with the Avalanche Forecast sites in each area before going out in the backcountry: JHavalanche.org or MTAvalanche.org
- o Need snowmobile permits to be on the motorized trails
- o Grooming schedule on all trails is weather dependent

This map is the visualization of a recreational trails network concept, and is meant as an overview of the trails connecting Fremont, Madison, Teton Counties of Idaho and Teton County in Wyoming. It is not meant to show all the trails in the area. Additional maps by agency or organization are available with more detailed information.

Fremont County makes no warranty expressed or implied as to the accuracy, validity, or correctness of any of the information contained herein. Fremont County assumes no liability for direct, indirect, special or consequential damages resulting from the use or misuse of this data or any of the information contained herein.