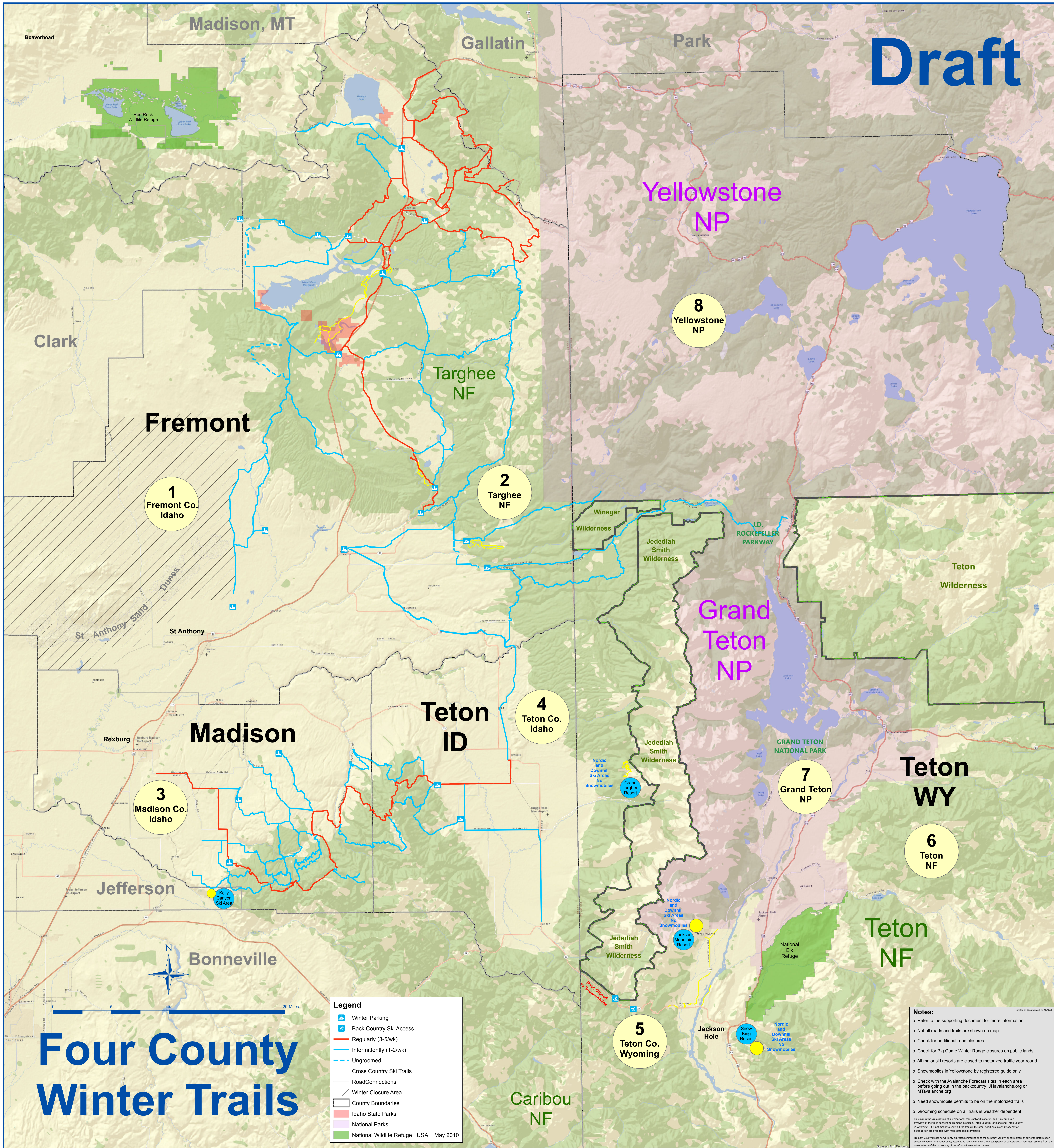


# Draft



1  
Fremont Co.  
Idaho

2  
Targhee  
NF

4  
Teton Co.  
Idaho

3  
Madison Co.  
Idaho

5  
Teton Co.  
Wyoming

7  
Grand Teton  
NP

6  
Teton  
NF

8  
Yellowstone  
NP

# Four County Winter Trails

- Legend**
- Winter Parking
  - Back Country Ski Access
  - Regularly (3-5/wk)
  - Intermittently (1-2/wk)
  - Ungroomed
  - Cross Country Ski Trails
  - RoadConnections
  - Winter Closure Area
  - County Boundaries
  - Idaho State Parks
  - National Parks
  - National Wildlife Refuge\_ USA\_ May 2010

**Notes:**

- o Refer to the supporting document for more information
- o Not all roads and trails are shown on map
- o Check for additional road closures
- o Check for Big Game Winter Range closures on public lands
- o All major ski resorts are closed to motorized traffic year-round
- o Snowmobiles in Yellowstone by registered guide only
- o Check with the Avalanche Forecast sites in each area before going out in the backcountry: JHavalanche.org or MTAvalanche.org
- o Need snowmobile permits to be on the motorized trails
- o Grooming schedule on all trails is weather dependent

This map is the visualization of a recreational trails network concept, and is meant as an overview of the trails connecting Fremont, Madison, Teton Counties of Idaho and Teton County in Wyoming. It is not meant to show all the trails in the area. Additional maps by agency or organization are available with more detailed information.

Fremont County makes no warranty expressed or implied as to the accuracy, validity, or correctness of any of the information contained herein. Fremont County assumes no liability for direct, indirect, special or consequential damages resulting from the use or misuse of this data or any of the information contained herein.