

# Multi-Modal Transportation Assessment and Development Strategy



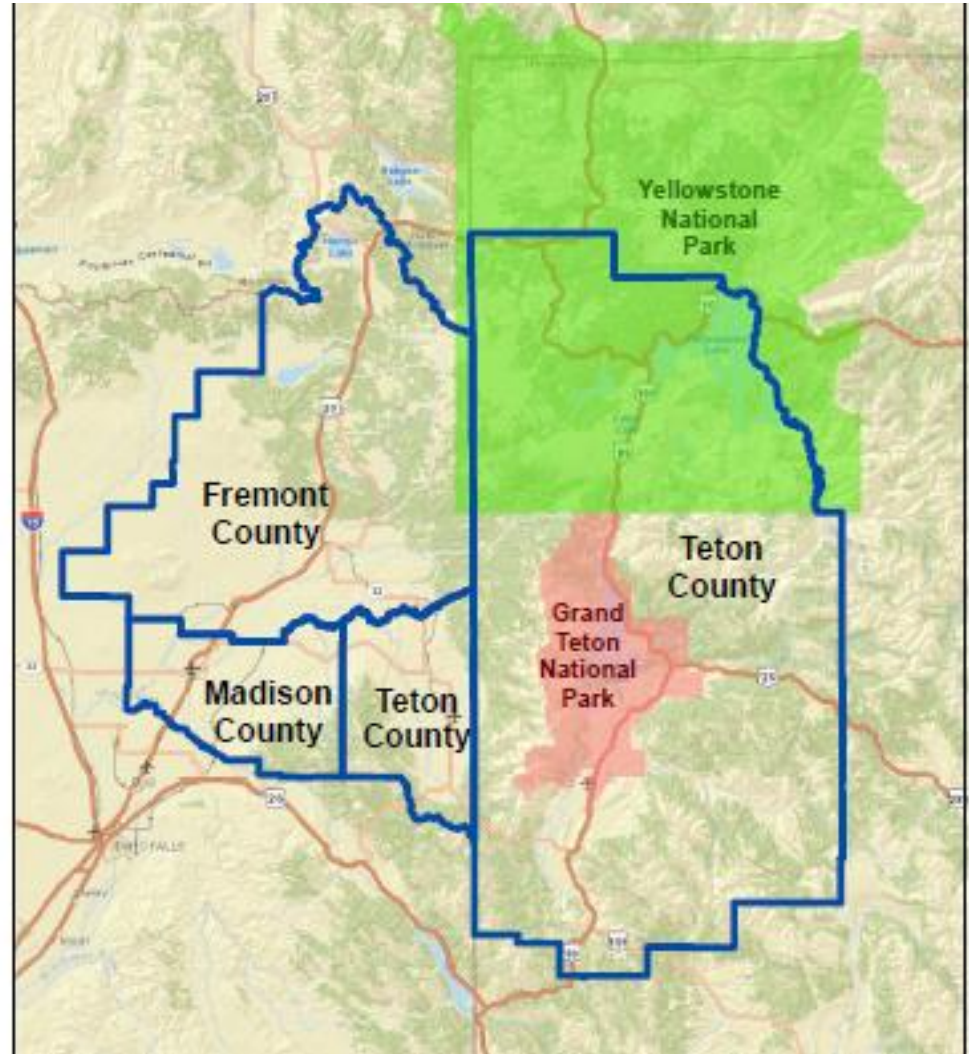
January 13, 2014 – Madison County Commission Meeting

# Regional Plan for Sustainable Development

- \$1.5 million HUD grant: February 2012-April 2015
  - Consortium: 4 counties; 7 cities; 3 federal agencies; YBP
  - Monthly conference calls; quarterly meetings; annual summit
- Project Features
  - Model Development Code for voluntary use by local govts.
  - Multi Modal Assessment and Development Strategy
  - Fair Housing Equity Assessment/Analysis of Impediments
  - Economic Development Planning
  - Regional Recycling Feasibility Study
  - Island Park Caldera Comprehensive Resource Assessment

# Connect Our Consortium Counties

The Linx Regional Transportation Co-op is committed to improving mobility within and between consortium cities and counties. This should help strengthen our local economies and better connect us to the entire Greater Yellowstone region.



# Table of Contents – Watch for more Online Postings during January

- Introduction v
- Region's Demographics & Destinations
- Region's Mobility Planning Resources
- An Interactive Mapping Tool on ArcGIS v
- Four Mobility Initiatives to Develop, Plan and Implement
  - Regional Transportation System
  - Integrated Recreational Trails Network v
  - Collaborative Marketing of Multi-Modal Transportation
  - Energy-Efficient, Low-Emission Travel
- Summary of Recommendations & M2 Strategy

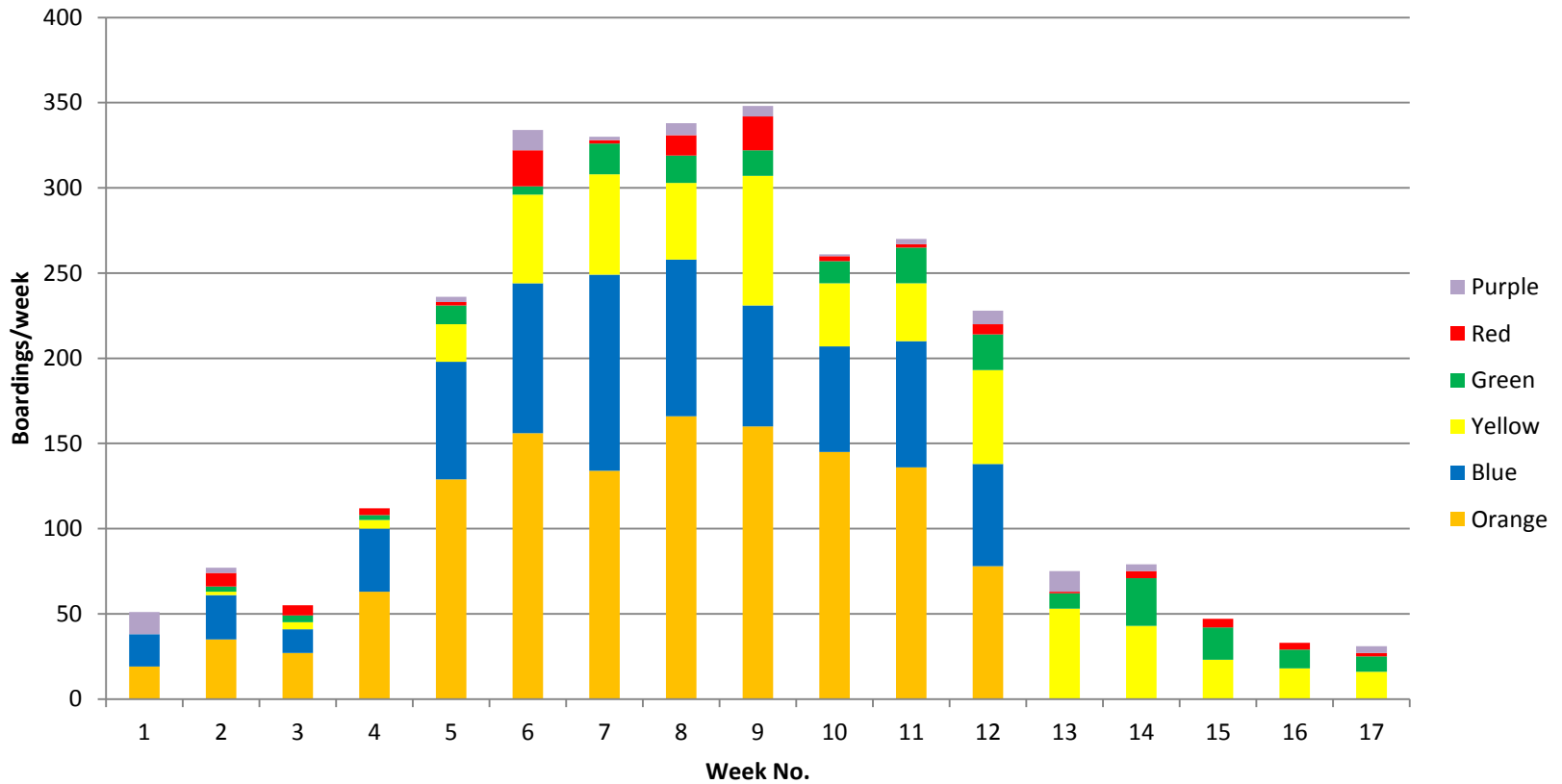
# Initiative 1 – An Incremental Approach to Building Our Public Transit System

- Short-term Technical Assistance Grant - CTAA
  - Suggests Transit Services Study for City of Rexburg before fixed-route system is launched
  - Support continued demand-response thru TRPTA
  - New shuttles emerging for after-hours (RPM)
- Intercity Connections in All Directions
  - Salt Lake Express awarded Intercity Bus Funds in Idaho
  - Midday Rexburg- Teton Valley -Jackson route connecting with north-south connections up to West Yellowstone



# Total Ridership Peaked at 350/wk

## 2905 Boardings over 119 Days



# 2014 WYDOT Intercity Bus Grant

- Proposed Routes and Schedules – 116-day season
  - Five routes; 628 daily miles eligible for reimbursement
  - To win bid, Linx providers would need to have larger capacity ADA-compliant buses available
  - Tickets to be sold online by overall route, not by segment
- Budget Features
  - \$285,310 total project cost (w/o YNP employee service)
  - \$192,006 funding request
  - \$93,304 in required matching funds
    - 20 Gateway Partners @ \$2,500 = \$50,000
    - \$38,000 in special grants and contributions

# Initiative 2 – An Integrated, Regional Recreational Trails Network

- Create a multi-modal trails system along US Hwy 20 that connects cities from Idaho Falls to Island Park
  - Explore legal uses of railroad right of way to accommodate various modes of travel
  - Connect to Trails of Madison County, HF Greenway and St. Anthony Sand Dunes

# Initiative 2 – Other Recommendations

- Coordinate with all counties and agencies on accommodating snow bikes and other emerging, trail-oriented sports
- Coordinate in design of multi-modal hubs
- Promote destination snowmobile and Nordic packages for the 4-county region
- Design multi-modal travel itineraries and packages for youth; international travelers

# Complete Streets Assessment

## Madison County, Idaho - Recommendations

- Use ordinance requiring sidewalks when a home sells to fill gaps in pedestrian network
- Urged Trails of Madison County group to widely distribute its trail maps
- Rexburg should commission a non-motorized transportation plan either alone or in concert with county and BYU-Idaho – the latter having “ideal conditions for walking and biking”.

# Initiative 3 – Collaborative Marketing of Multi-Modal Transportation

- Promote special events in Madison County
- Marketing strategies for building regional awareness and support of public transit
- Ridership figures and projected demand; defining the rider “archetype”
- Plans to update “one-stop” online trip planning and ticketing systems available to public transit providers in three states

# Toll-Free Help Line – 877-454-5469

Call types	1550	
General park and bus questions	722	47%
Schedule Questions	559	36%
Noted as employees	85	5%
RVers	34	2%
Hiker/Biker	58	4%
Airport questions or destinations	90	6%
ADA questions	2	0%

# Initiative 4 – Partnership for Energy-Efficient, Low-Emission Travel

- Yellowstone-Teton Clean Energy Coalition (YTCEC) programs for expanding use of alternative fuels and electric/hybrid vehicles
- Regional incentives for carpooling, ride-sharing, wider use of “We-Cars”
- Idle-free policies; educational programs for commercial drivers and government fleets

# Scenario Planning Tool & Next Steps

- Katie Wilson, ISU Master's Student, will orient you to project's Interactive Map
- Please review final draft of M2 Plan as chapters are posted through mid-January
- Consider match commitment of 2015 funds for support of midday Rexburg-Jackson route
- Gateway Partner - \$2,500 commitment for Yellowstone Gateway Connections

# For More Information on RPSD

- Visit [www.sustainableyellowstone.org](http://www.sustainableyellowstone.org)
- 2014 HFWC meetings to be focused on IP Caldera Resource Assessment/Futures Study
- Consortium Summit planned for May 2014
- Brent McFadden is county rep on Consortium
- Contact Jan Brown, Special Projects Manager for Fremont County Planning & Building at:
  - [jabrown@co.fremont.id.us](mailto:jabrown@co.fremont.id.us)
  - 208-624-4643 office; 559-3125 cell (1-26-14)