

Elements of the Final Multi-Modal Assessment and Development Plan

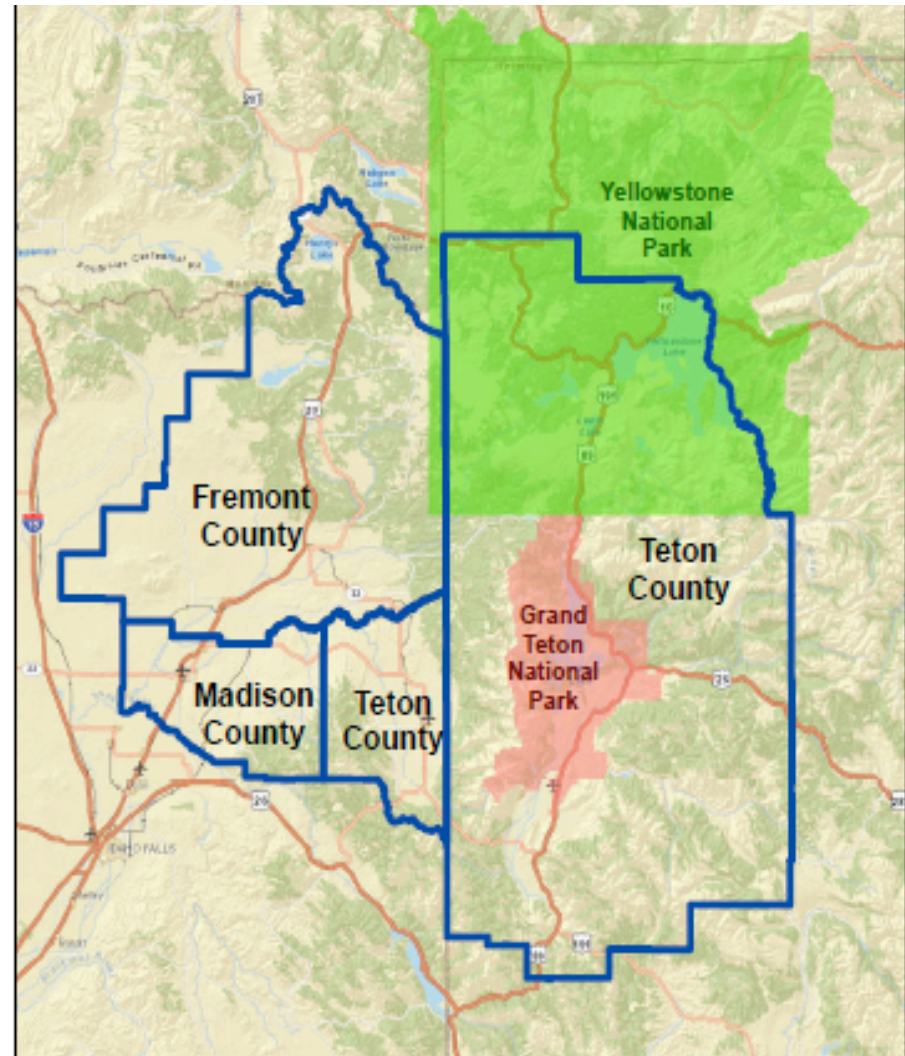


Western Greater Yellowstone Consortium
Second Annual Summit
May 7, 2014 – Teton Springs Lodge & Spa

Our Two Major Cities Leading the Way

START Bus in Teton Co. WY has highest ridership in entire 27-county region, including a Teton Valley commuter service. An Integrated Transportation Plan is now being developed by Jim Charlier & Associates

BYU-Idaho is promoting a pedestrian-friendly campus for 15,000+ students, but no fixed-route transit yet in Rexburg. CTAA has awarded long-term technical assistance in studying fixed-route feasibility for the city



Chapter 1

Demographics and Destinations

- Profile of each county
- Regional travel destinations
- List of each county's major employers
- Major educational and museum facilities
- Senior centers and medical institutions

Chapter 2

Mobility Planning Resources

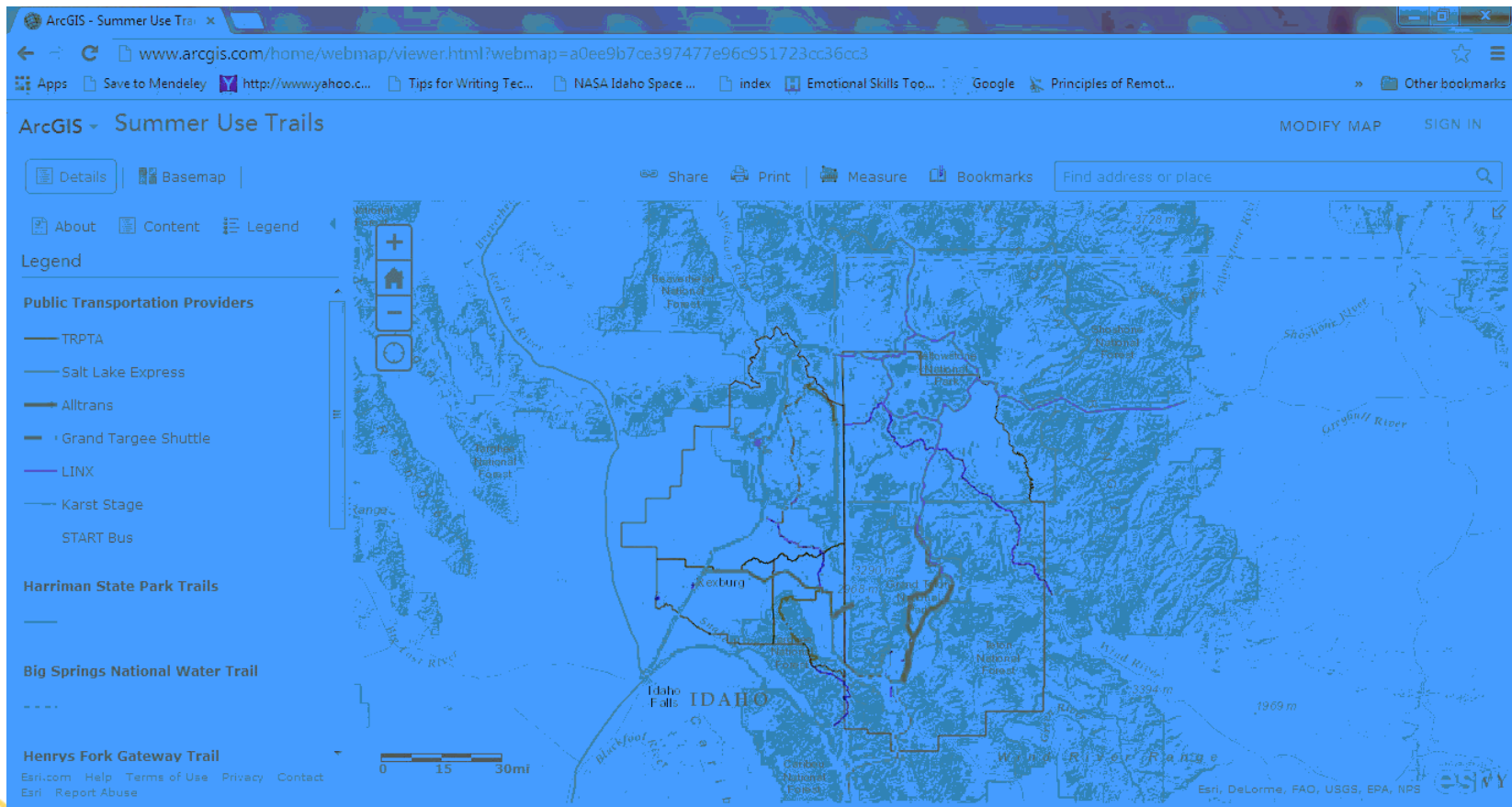
- Federal funding sources and programs
- Idaho and Wyoming state funding structures
 - CTAI in Idaho plays critical role in grant allocation
 - County-level mobility coordination (both Teton counties)

- Recommendation: The City of Rexburg should begin to negotiate now with Walmart to incorporate a North Rexburg Transit Center and Park & Ride facility as part of the new Super Walmart planned for completion in 2016. This should not preclude planning for downtown and campus infrastructure that will be critical intermediate hubs for an eventual fixed route system.

- University research center (WTI)
- Nonprofit organization (YTCEC – Clean Cities)

Chapter 3

An Interactive Mapping Tool

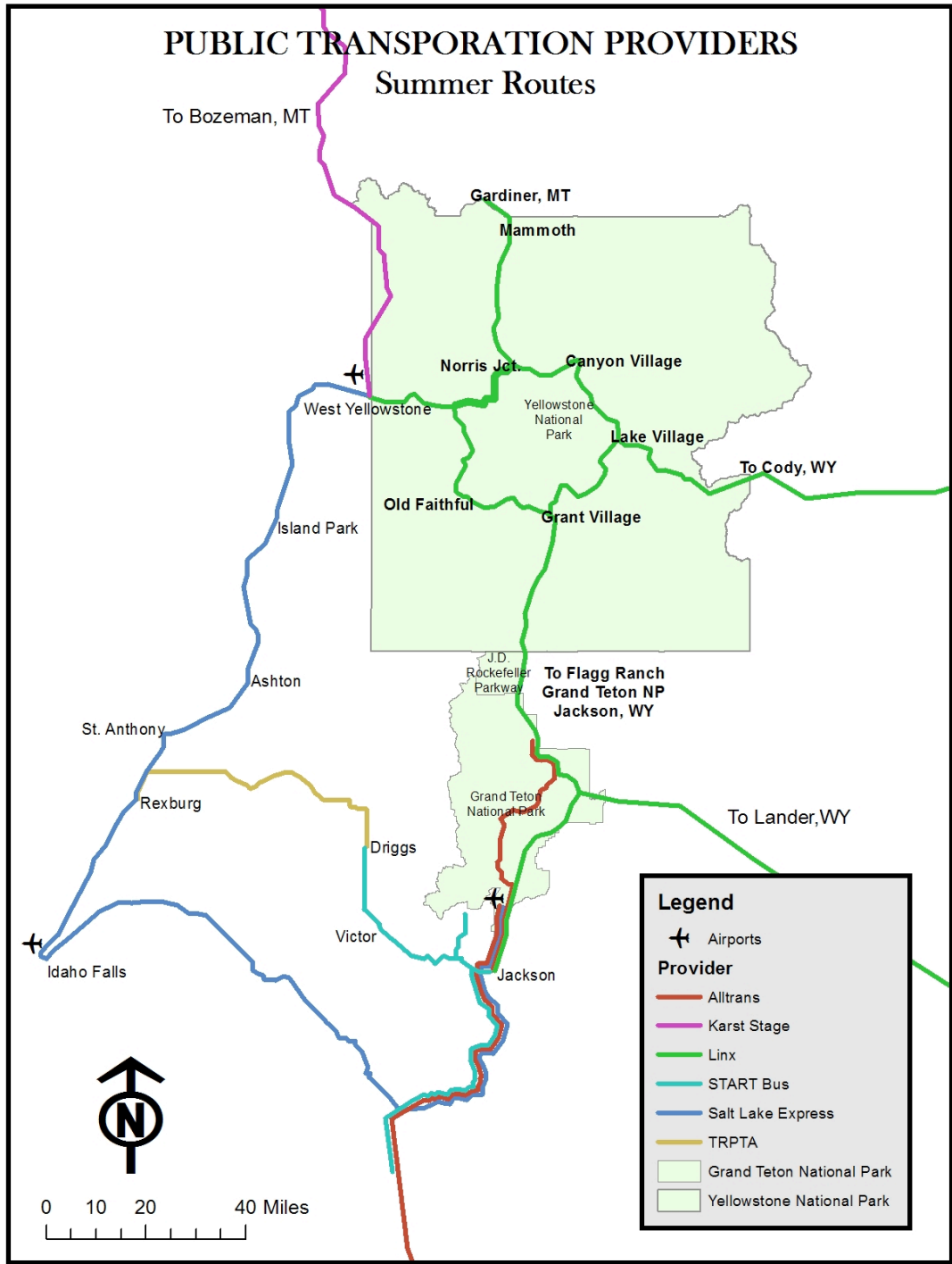


Chapter 4, Initiative 1 – An Incremental Approach to Building Our Public Transit System

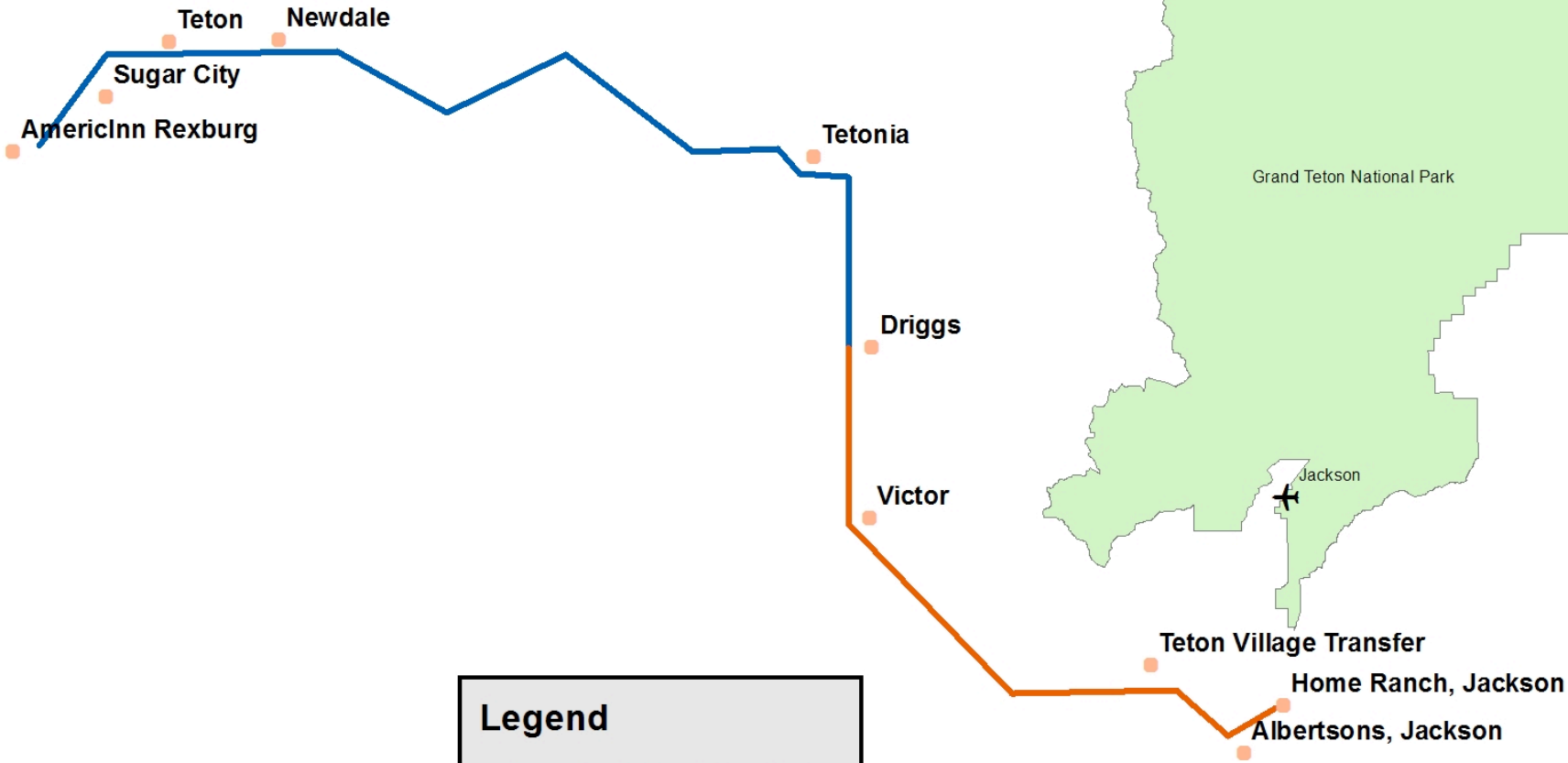
1. Enhance Intra-city and Commuter Bus Services within each Consortium County
2. Expand Intercity Bus Services to Improve Connectivity across the Western Greater Yellowstone Region
3. Advance an Integrated Public Transportation Network that Links the Region's National Parks and Outdoor Recreation Areas
4. Preserve Future Options for Using the Region's Historic Rail Infrastructure and Right-of-Ways

PUBLIC TRANSPORTATION PROVIDERS

Summer Routes

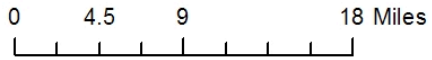


PROPOSED DEVIATED FIXED ROUTE



Legend

- PROPOSED STOPS
- ✈ Airports
- Jackson to Driggs bus
- Rexburg to Driggs Bus
- National Park



Yellowstone Pilot Demonstration

- Three-year pilot demonstration documented as a [case study](#) in Multi-Modal Assessment
- WYDOT 5311 (f) funding not renewed for 2014, so Linx service both inside park and between WY cities has been suspended for 2014 season
- Linx members lost more than \$185K during pilot
- Concession employees comprised 75% of the ridership in 2013 while covering 15% of cost

Goal 2.1. - Lay the groundwork for development of a region-wide trails network

Goal 2.2. - Advance economic development scenarios that will integrate the Trails Network concept

Goal 2.3. - Implement Alta Planning's Complete Streets recommendations for each city and county

Initiative 3 – Collaborative Marketing of Multi-Modal Transportation ([Chapter 6](#))

1. Further survey these transit customer archetypes:
 - Rural Residents
 - College Students
 - Year-round and Seasonal Employees
 - Recreational Riders
 - Urban Youth
 - International Visitors
2. Form a Consortium-wide mobility advisory committee to assist with problem solving in designing and implementing inter-city bus services and to share responsibility for administering FTA grants

For More Information on M2 Plan

- Visit www.sustainableyellowstone.org
- Review 50 recommendations for enhancing mobility across the four-county region
- Contact Jan Brown, Special Projects Manager for Fremont County Planning & Building at:
 - jabrown@co.fremont.id.us
 - 208-624-4643 office; 604-4404 cell