

Multi-Modal Transportation Assessment and Development Plan



First Annual WGY Consortium Summit – May 2, 2013

Multiple Elements in M2 Contract

- **Concept Plan for a Region-Wide Recreation Trails Network** – including Complete Streets consultation and workshops in 4 counties
- **Prospects for Rail Diesel Car (RDC) Service**
- **Online Technologies – Planning/Development**
- **Multi-Modal Transportation Assessment and Development Plan** – roll up of all studies, plans and demonstration projects affecting 4 counties

Conceptual Recreation Trails Network

- Advisory Team formed with 80+ participating
- Six meetings held from February to September,
- April 26, 2012, kick-off had 16 presenters from resource agencies, local govts, trail groups
- Trail descriptions/inventory for future database
- An GIS integration of existing trails across the four counties was first major step; both summer and winter map layers created & posted online

Grand Teton Multi-Use Pathways



Teton Valley Trails and Pathways



Ashton to Tetonnia Trail



Henry's Fork Greenway – St. Anthony



Trail Network Scenarios

- Build network using current bike and pathway trails from Jackson to West Yellowstone
- Integrate Linx buses equipped with ski and bike carriers for stops at trailheads
- Include Zip Car/WE Cars in city locations to assist with reaching recreational sites
- Coordinate snowmobile trails, permits and packages for multi-day cross-border experiences

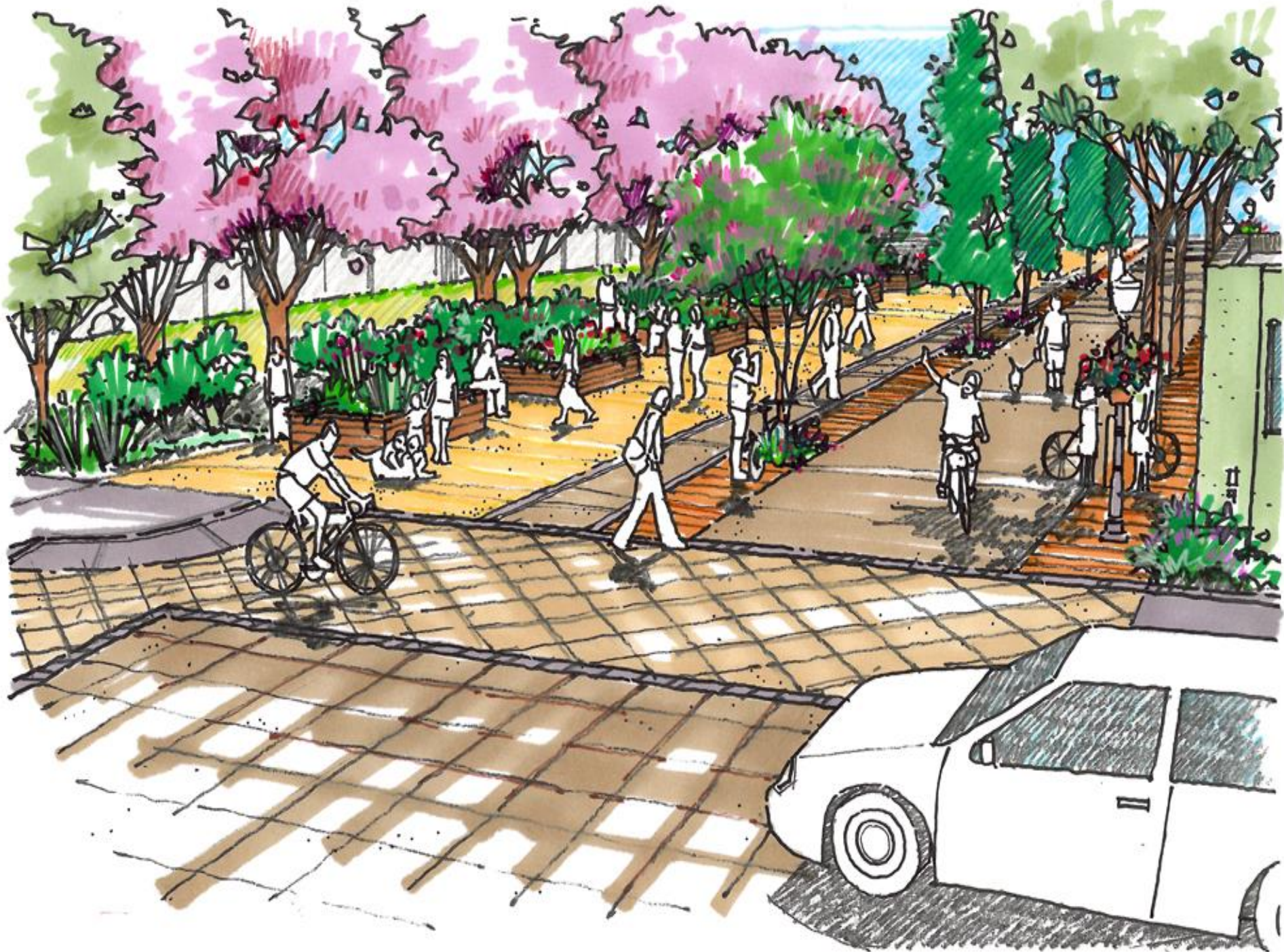
Trail Network Scenarios – Cont.

- Connect cities along Hwy 20 from Idaho Falls to Island Park using highway/rail right of ways
- Increase tourism with planned top-to-bottom connectivity from planes-buses-shuttles-bikes
 - Tetonia to Driggs
 - Ashton to Warm River
 - Millennium Trail continuation: Victor to Wilson
 - All community trails along Hwy 20

Complete Streets Assessment

Four public workshops and city/county consultations were held October 16-18, 2012

- 55 people attended in total
- Conducted by Joe Gilpin, Alta Planning and Design and coordinated by Kyle Babbitt of Linx
- Individual reports with recommendations for each county and their cities plus final summary will all be integrated into M2 Assessment



Complete Streets Assessment

Teton County, Wyoming - Findings

- Town of Jackson well-positioned to pass a Complete Streets policy/ordinance – would be only one in Wyoming outside of Cheyenne
- Pedestrian Improvement Plan still needed
- Much enthusiasm for the Integrated Transportation Plan concept that is well aligned with this Multi-Modal 4-county planning effort.

Complete Streets Assessment

Teton County, Idaho – Findings/Suggestions

- Great enthusiasm noted for Teton County-Driggs-Victor Joint Transportation Plan
- City of Driggs closest to passing a Complete Streets Policy; all three entities open to design
- Recommended ticketing individuals for poor bicycling behavior, with training course available to remove ticket from record

Complete Streets Assessment

Madison County, Idaho - Recommendations

- Use ordinance requiring sidewalks when a home sells to fill gaps in pedestrian network
- Urged Trails of Madison County group to widely distribute its trail maps
- Rexburg should commission a non-motorized transportation plan either alone or in concert with county and BYU-Idaho – the latter having “ideal conditions for walking and biking”.

Complete Streets Assessment

Fremont County, Idaho – Findings/Suggestions

- Update & complete Development Regulations
- Think more broadly about Complete Streets elements when approving LIDs in the county
- Ashton and St. Anthony have “great potential” as walkable and bikable towns; need studies
- Island Park has “unique” challenges given US 20 along its length; pursue paved bike trails

Complete Streets Assessment

High potential for **multi-million dollar bicycle tourism** for 4-county region. Make it safer by:

- Designing new roads with shoulders of 4' clear width free of rumble strips
- Keeping overlay or chip seal stream out of middle of the road shoulder when resurfacing
- Constructing separate paved pathways in high traffic areas

Prospects for Rail Diesel Car Service

Collette Rinehart researched concept of operating an RDC between Ashton and Idaho Falls:

- Researched RDC history in the USA
- Found an RDC model suited to Eastern Idaho rider needs and track gauge
- Researched use of existing tracks and where depots and transfer stations might be needed
- Obtained input from large employers, schools

Self Propelled "Buddliner" Rail Diesel Car



Stadler GTW Diesel-Electric Rail Car



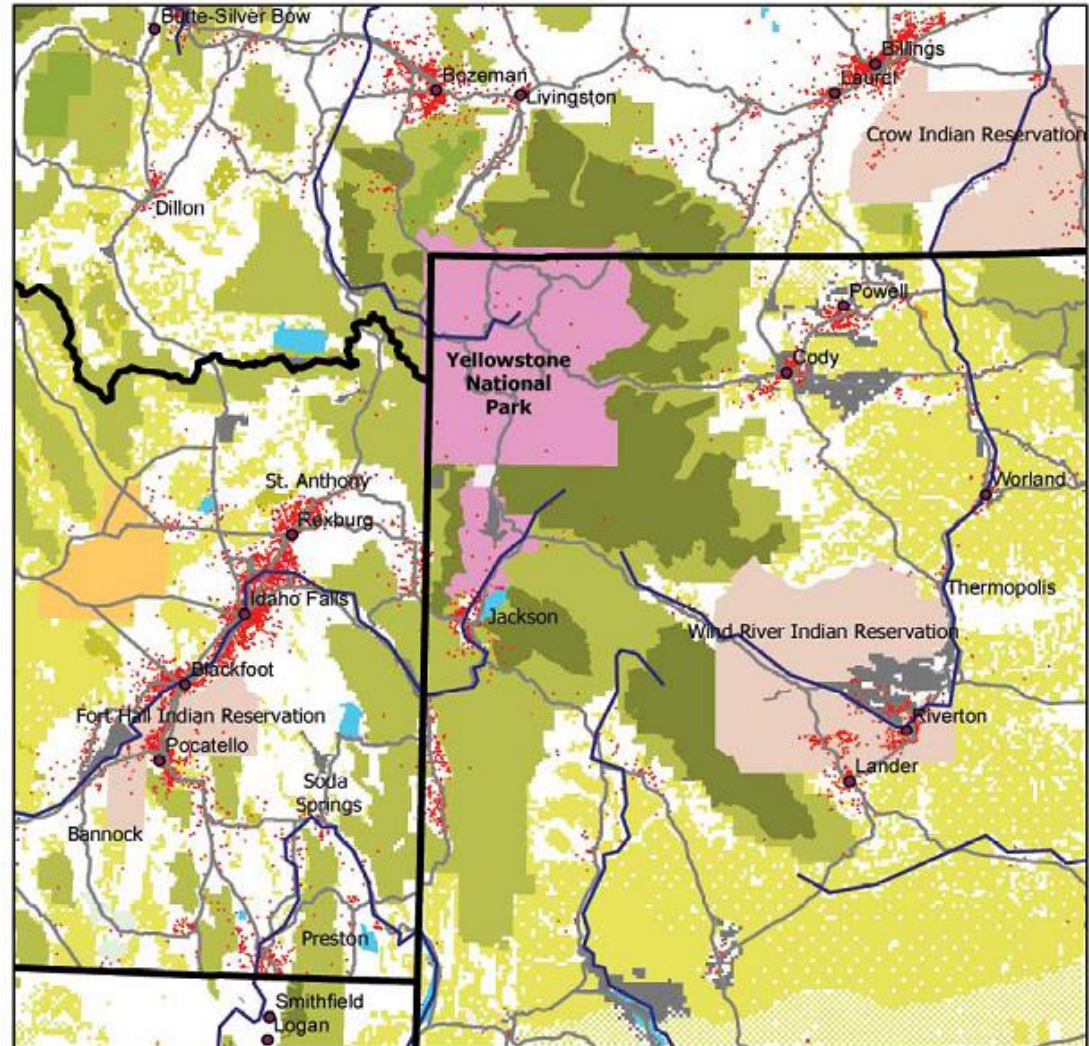
Prospects for Rail Diesel Car Service

Current obstacles:

- Track use is limited between 2:00-8:00 am
- Lack of depot, shops and other infrastructure
- Cost of 200-passgr Stadler RDC exceeds \$6 M; purchase of used RDCs possible from Texas
- Lack of support for existing bus services makes it unlikely to consider rail options at this time

Connecting Greater Yellowstone

As Linx providers expand routes, improve service, share marketing, and offer online ticketing, mobility will increase among residents as well as international guests



Linx: Applying the Co-op Model

Provides mobility management services for 65+ Co-op member-owners in Idaho, Montana and Wyoming:

- Online marketing presence for both large and small providers
- 24-hour “Help Line” for personal transportation assistance
- Online reservation/ticketing service; printable boarding passes
- Three-year pilot demonstration within Yellowstone NP
- Alignment of provider schedules and transfer points to form a more seamless and affordable regional transportation system
- Annual dividends based on riders’ ticket purchases and provider patronage of Co-op services once net profit is realized

Linx Providers Serving Four Counties



Best Choice Around Taxi

Destination Investors



Business and Community Leaders



Airport/Charter Investors



Idaho Falls
regional airport

Co-op Governance is Democratic

President: Arthur Kull – Idaho Falls

Vice-President: Kathy Pope, Salt Lake Express – Rexburg, ID

Secretary/Treasurer: Brett White, Wind River Development Fund –

Directors: ID - Ken Bullock

MT - Justin Cook, Jeremy Fatouros & Jeff Schmidt

WY – Michael Wackerly, Ben Eastmond & Todd Scott

Linx Staff Support: Jan Brown, Interim General Manager
Collette Rinehart, Linx Sales Manager

Strategic Communications Plan

In 2012 Flying Horse Communication proposed a 3-year marketing strategy focused on the national parks to build rider awareness of the entire region (\$2.5 M)

1. I Get Around Yellowstone with Linx – kick-off campaign
2. Your Yellowstone Connection – 35% global
3. Connecting Yellowstone to the World – 50% global

www.linx.coop

www.yellowstoneinsider.com

www.ohranger.com



follow us on
twitter



RIDE LINX IN YELLOWSTONE

CLICK HERE



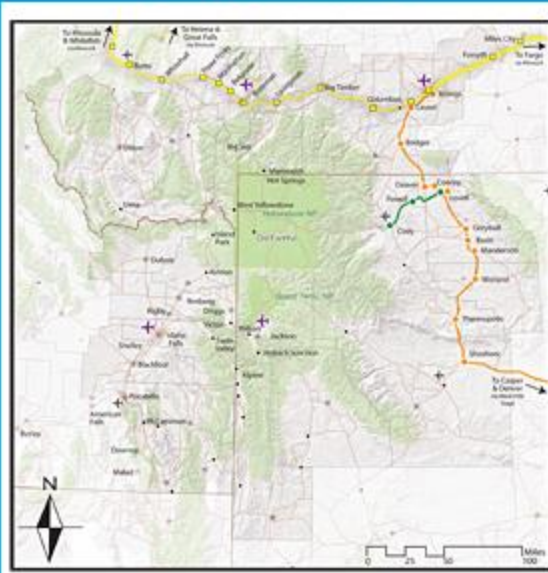
Call the LinX HelpLine
877-454-LINX (5469)

- Home
- Plan My Trip
- MyLinX
- Transportation Services
- Join LinX
- FAQs
- News
- LinX Members

[Home](#) > [Plan My Trip](#)

LinX can get you where you need to go in the Greater Yellowstone region

Book your ticket for bus travel between cities



Find regional transit and taxi information



Plan your trip to Yellowstone National Park



[Download a PDF of the map.](#)

[Download a PDF of the map.](#)

[Download a PDF of the map.](#)

Toll-Free Linx Help Line

1-877-454-5469 (Linx)

- **Summer** - Rings to West Yellowstone Ops Center
- **Off-Season** – Voice mail messages sent to staff computers for immediate follow up
- **Most frequent requests?**
 - How to get to Yellowstone National Park
 - How to travel between Jackson and Bozeman



Call the Linx HelpLine
877-454-LINX (5469)

[Purchase Tickets](#) | [Agent Login](#)

February 3, 2012 6:14 PM

Your Current Purchase Information

You have not started yet.

This step: Choose departure and arrival points.

Next step: Choose route(s).

Returning user login

E-mail address

Password

[Forgot your password?](#)

[Create an account](#)

Choose Departure and Arrival Points

Welcome to the online ticketing system! Please choose your departure and arrival points, and whether this is one-way or round-trip, below.

Online Ticketing System

(Please type the first few letters of the City you're looking for)

[Switch to List View for Departure and Arrival options/ADA screenreader-optimized](#)

Leaving from:



Going to:



Departing:



Ticket type:

One Way

Round Trip

Passengers:

Adults:

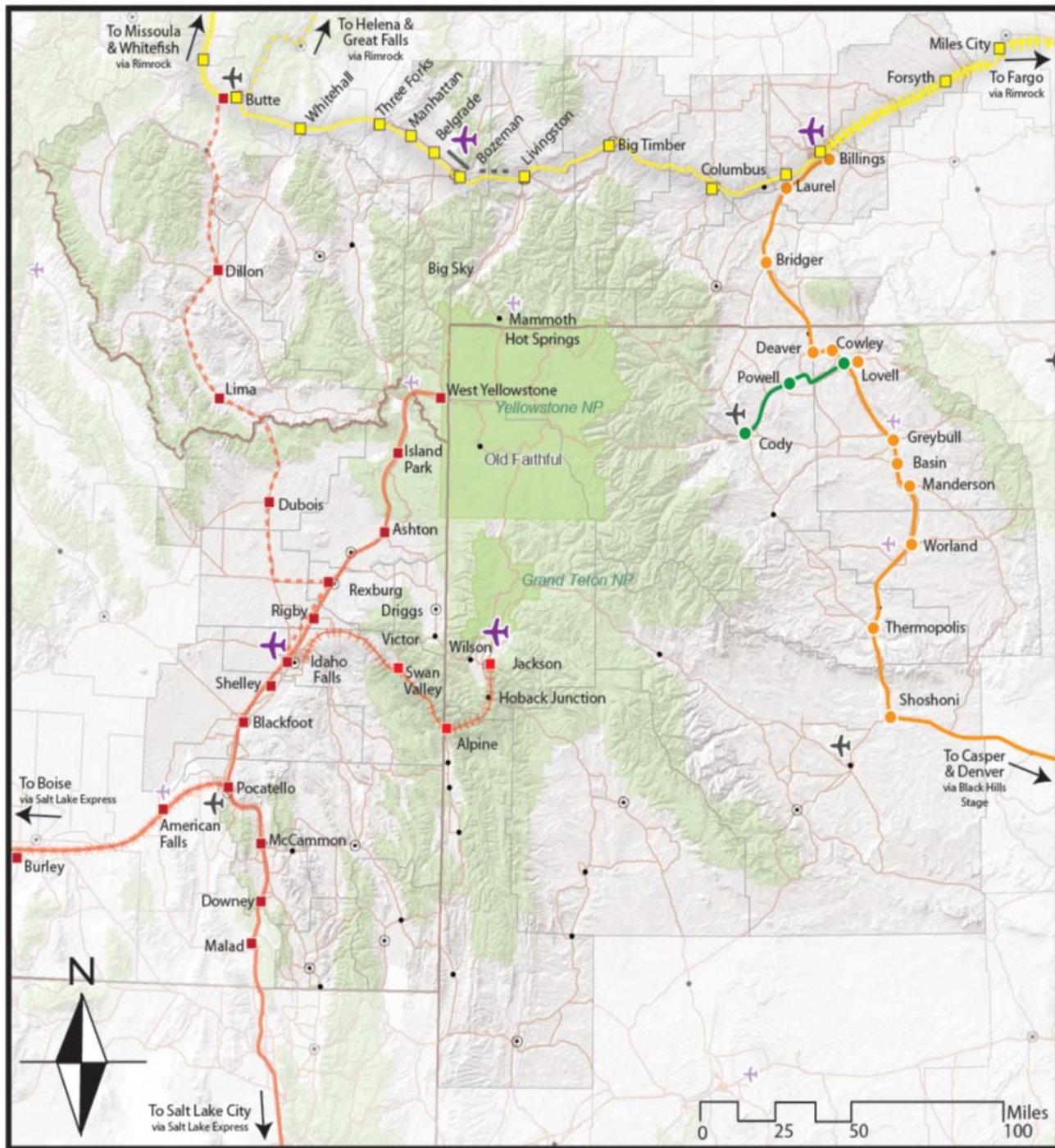
Seniors:

Children:

Military:

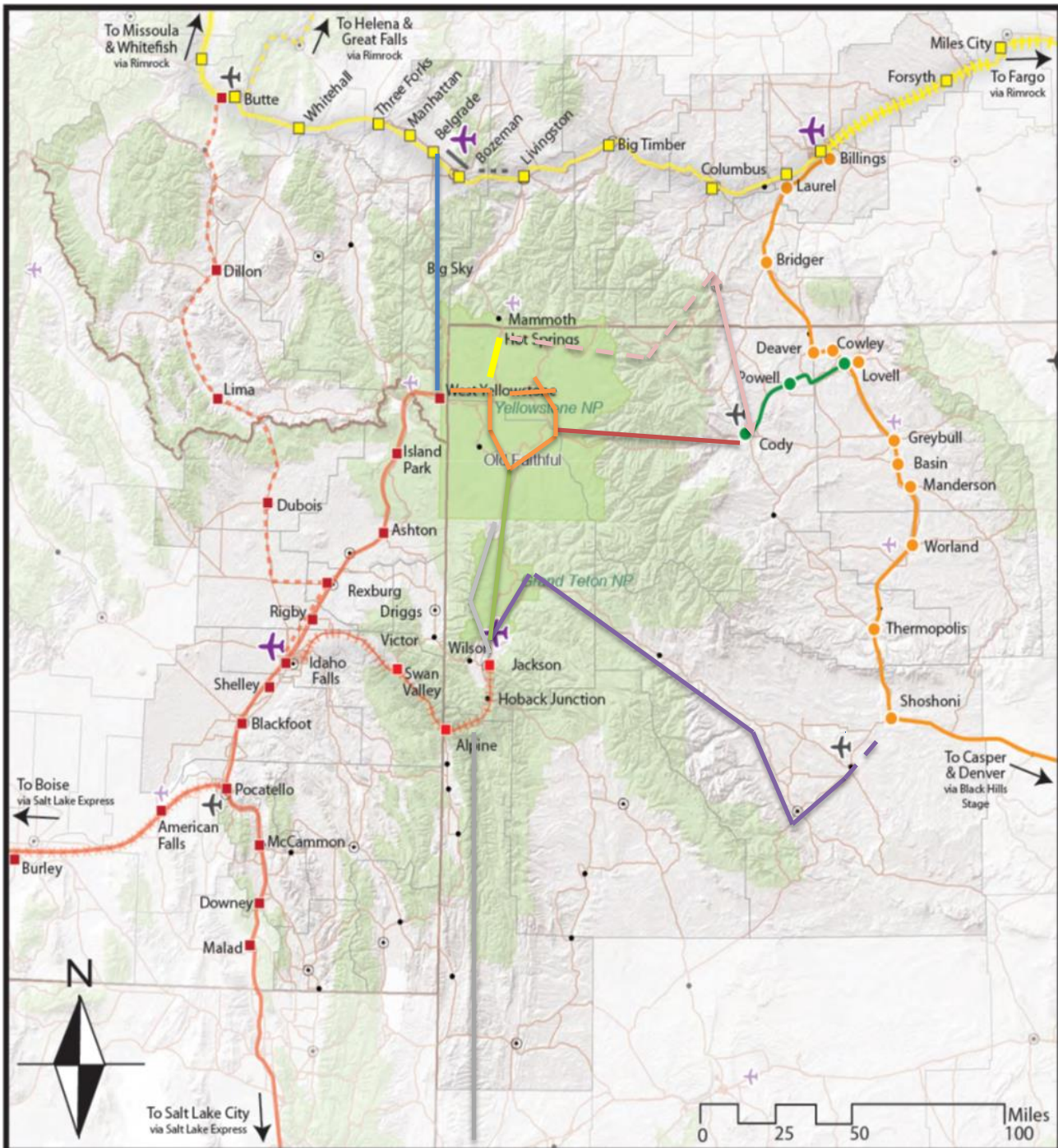
Please note that all tickets sold on linx.coop are non-refundable and non-transferable. Changes to your travel plans are subject to the policies of each carrier; please contact the individual carrier(s) identified on your tickets, or the Linx HelpLine at 877-454-LINX (5469) with any questions or concerns.

Ticket Manager Pro 3.0 - online bus ticketing store provided by [Lock Media Services, Inc.](#)
© 2003-2012 Lock Media Services, Inc.



Yellowstone Gateway Connections

- WYDOT awarded \$145,155 grant for Intercity bus service
 - New bus stop signs being designed
 - Four-place bike carriers to be installed on all buses
- Will operate **June 4 - September 30** using six providers
- Daily round trips between Jackson and Cody through Yellowstone; with connections to Gardiner, West Yellowstone
- New service to Dubois, and Riverton/Lander 3 X/week
- Clockwise and counter-clockwise service on south loop that begins and ends in West Yellowstone



Multi-Modal Assessment & Plan

Roll up all elements completed through this Sept.

- Recreational Trails Plan and Scenarios
- Complete Streets reports and follow through
- Rail Diesel Car report
- Lessons learned in online sales and marketing
- Final ridership reports for 3-yr YNP Pilot Demo
- Relevant results from Buses for Byways research

Multi-Modal Assessment & Plan

Public Involvement Plan yet to be implemented:

- Outreach to this Summit, HF Watershed Council
- Online and intercept surveys to assess demand
- Personal interviews of bus providers and transit officials; incorporation of current studies/plans
- Fall presentations to each consortium governing body with public open house held before each

YOU CAN GET INVOLVED!

- Join the Recreational Trails Advisory Team
- Review draft reports, trail maps once new project website is operational again
- Forward online survey links to your friends
- Share your agency's latest surveys, plans and/or ridership stats for inclusion in M2 Assessment
- Take the Buses for Byways Recreation Access Survey before you eat lunch!