



# Western Greater Yellowstone Consortium Housing Study

Quality of Life Findings

July 2014

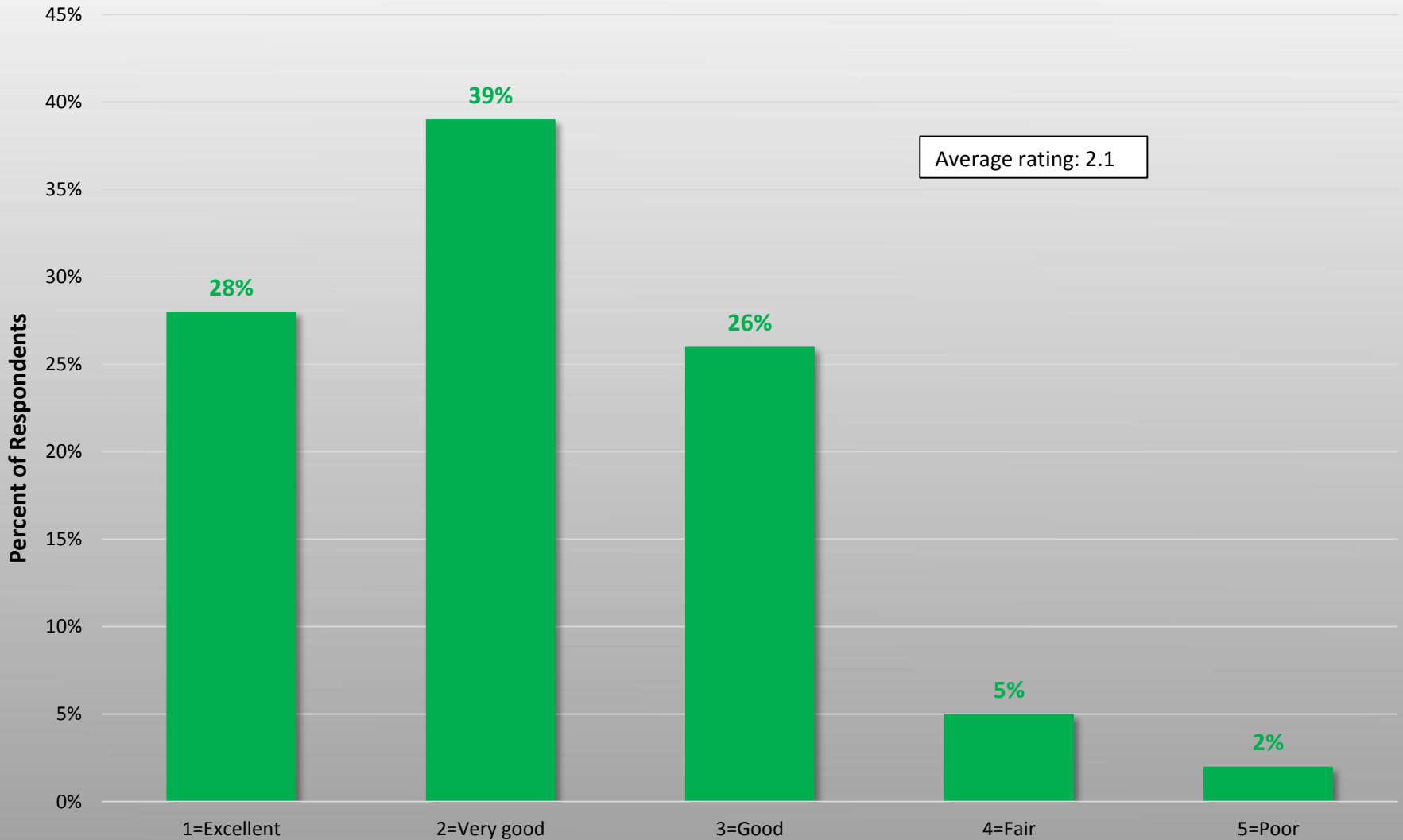
# Quality of Life

Analysis was conducted on the Yellowstone Housing Survey questions relevant to quality of life. These questions include:

- Q23. Please rate your current quality of life.
- Q25. Why do you choose to live in the region?
- Q26. What do you consider to be the biggest threats to the quality of life in this region?

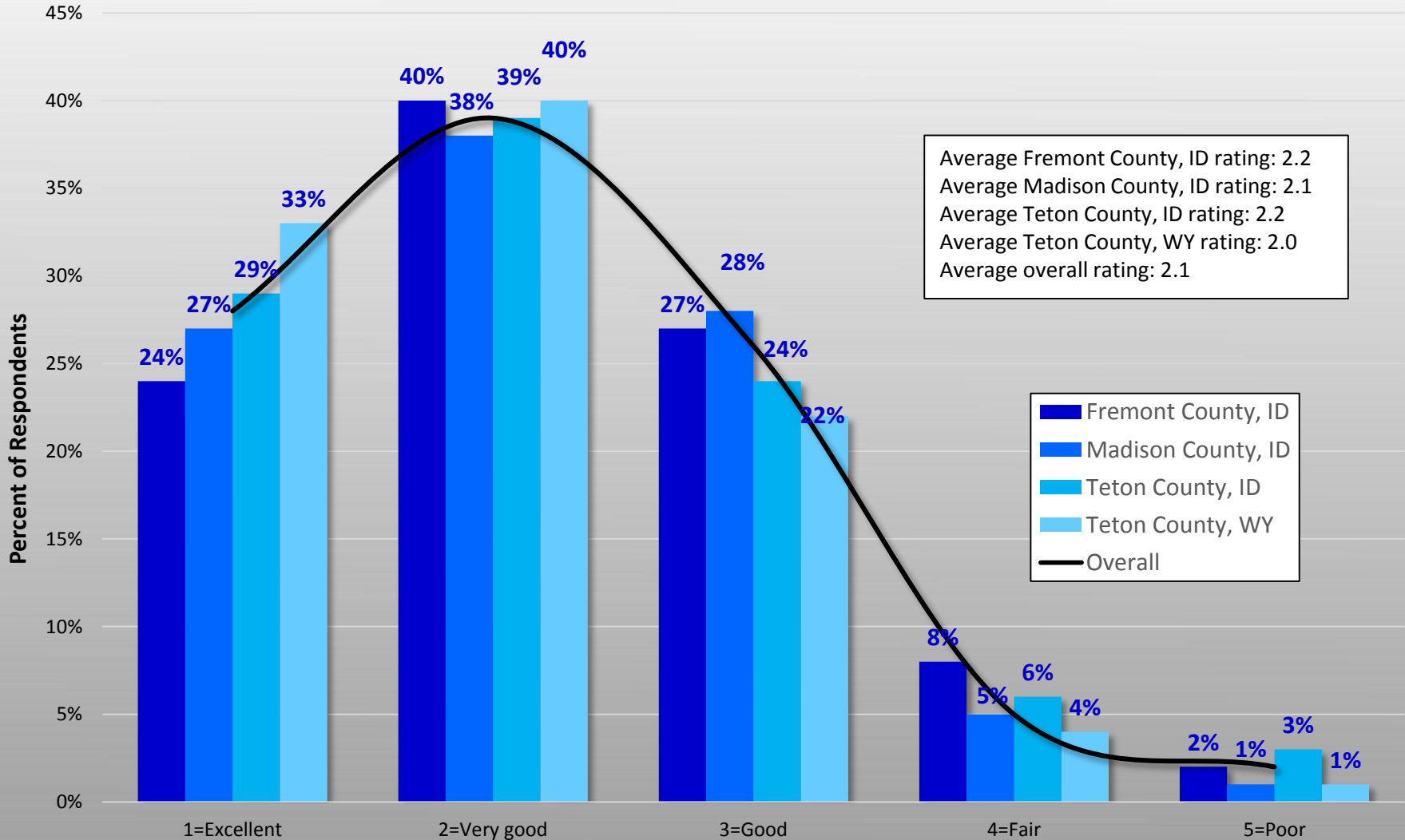
Responses to the quality of life survey questions were broken down by county, renters vs. owners, presence of children in household, length of time lived in area, and age of household members. This preliminary report focuses specifically on the county and length of time in area breakdown, as these variables exhibit the most significant differences among groups.

## Quality of Life Rating - Overall



Source: 2014 Housing and Quality of Life in the Teton/Yellowstone Region Survey.

## Quality of Life Rating - by County

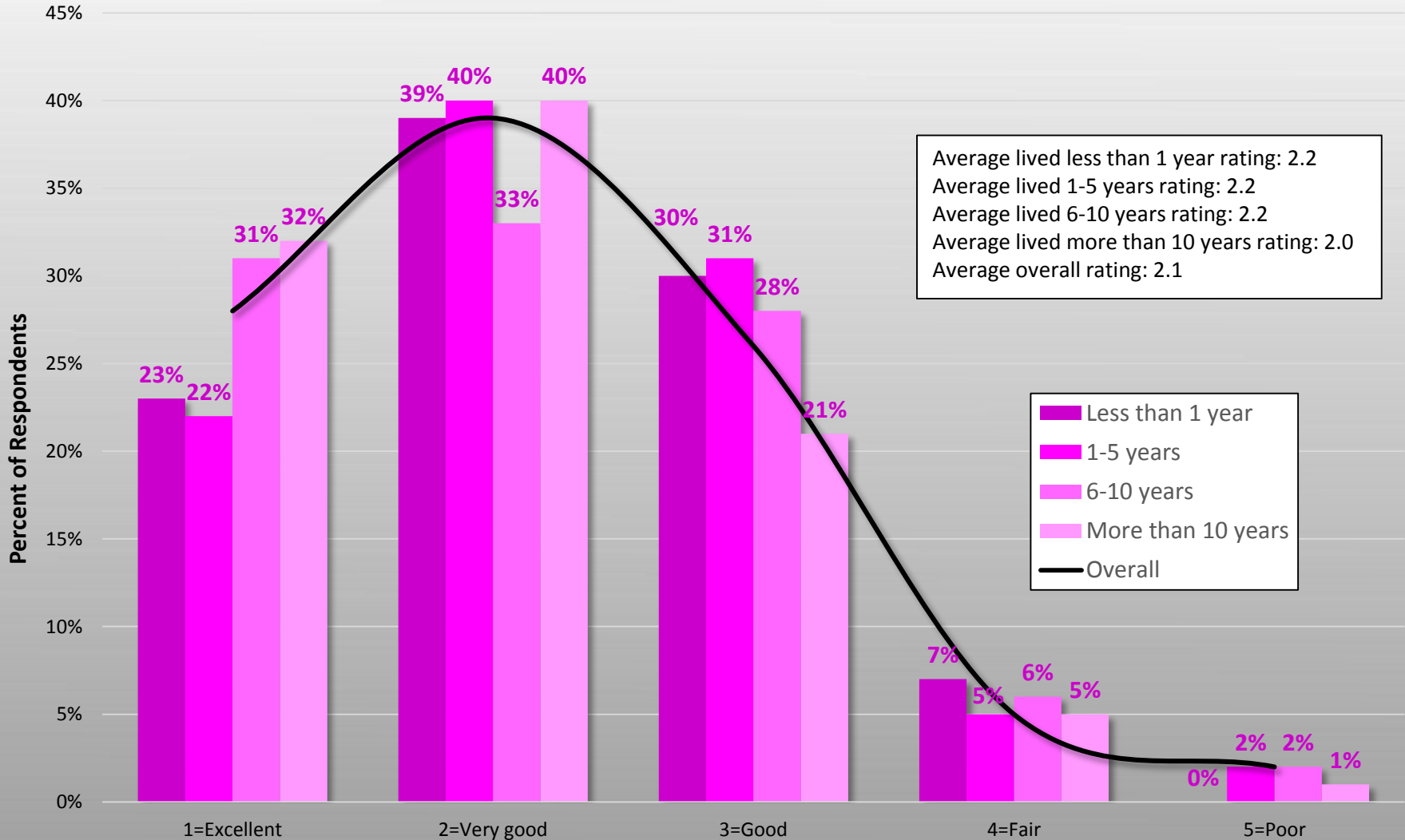


Average Fremont County, ID rating: 2.2  
 Average Madison County, ID rating: 2.1  
 Average Teton County, ID rating: 2.2  
 Average Teton County, WY rating: 2.0  
 Average overall rating: 2.1

■ Fremont County, ID  
 ■ Madison County, ID  
 ■ Teton County, ID  
 ■ Teton County, WY  
 — Overall

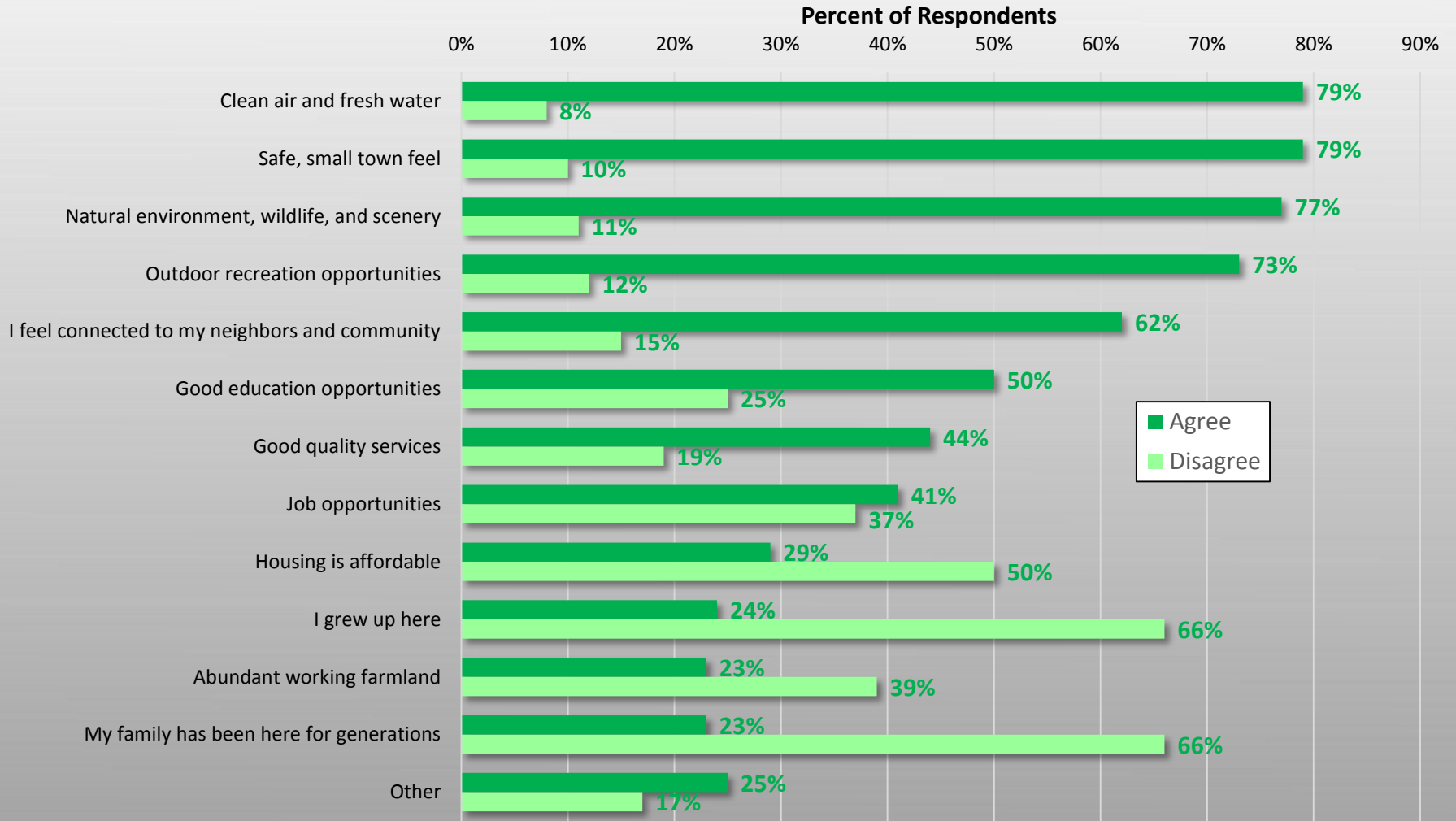
Source: 2014 Housing and Quality of Life in the Teton/Yellowstone Region Survey.

## Quality of Life Rating - by Length of Time in Area



Source: 2014 Housing and Quality of Life in the Teton/Yellowstone Region Survey.

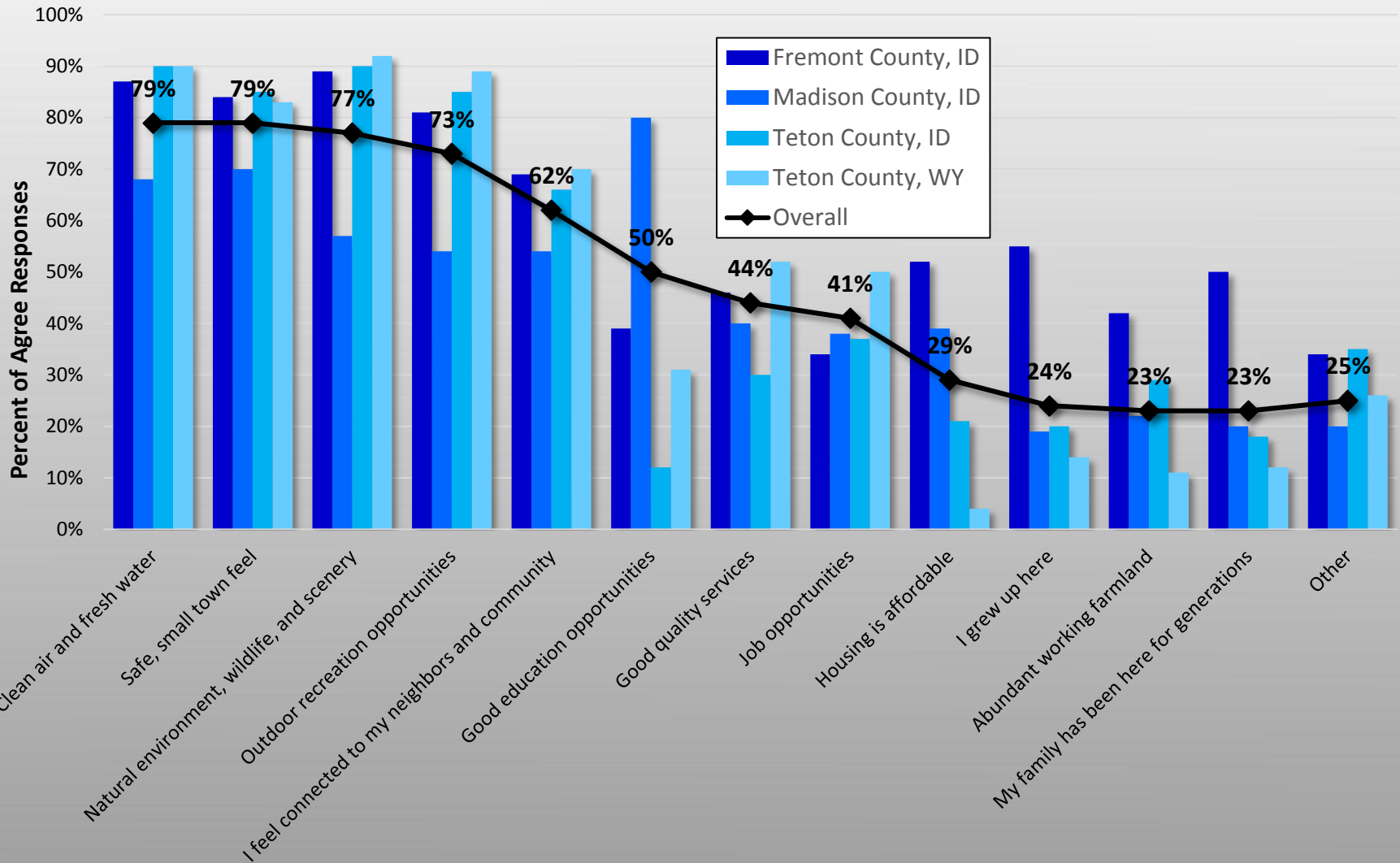
# Reasons for Living in Region - Overall



Agree=sum of 4 (agree) and 5 (strongly agree) responses; disagree=sum of 2 (disagree) and 1 (strongly disagree) responses.

Source: 2014 Housing and Quality of Life in the Teton/Yellowstone Region Survey.

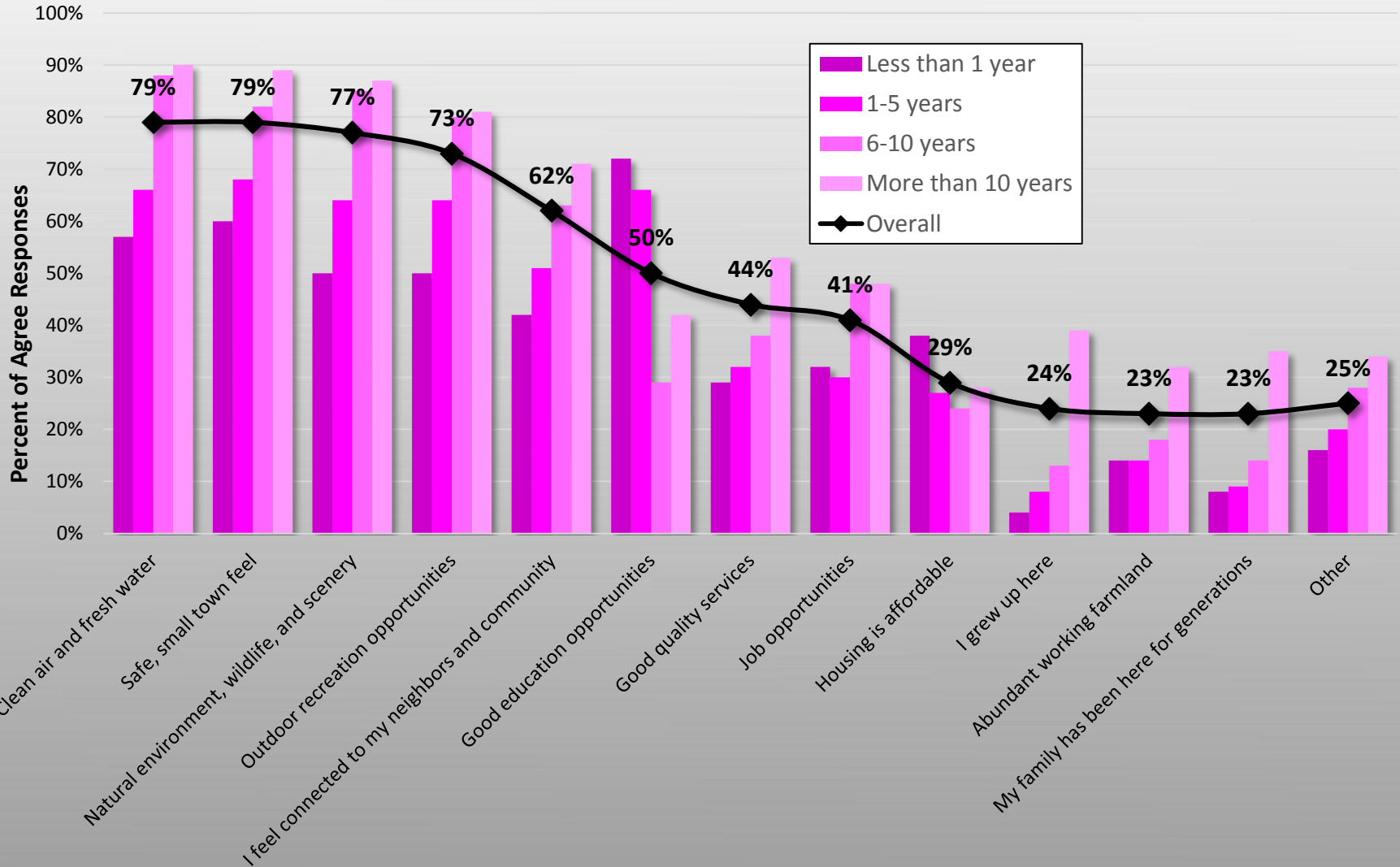
## Reasons for Living in Region - by County



Source: 2014 Housing and Quality of Life in the Teton/Yellowstone Region Survey.

Agree=sum of 4 (agree) and 5 (strongly agree) responses.

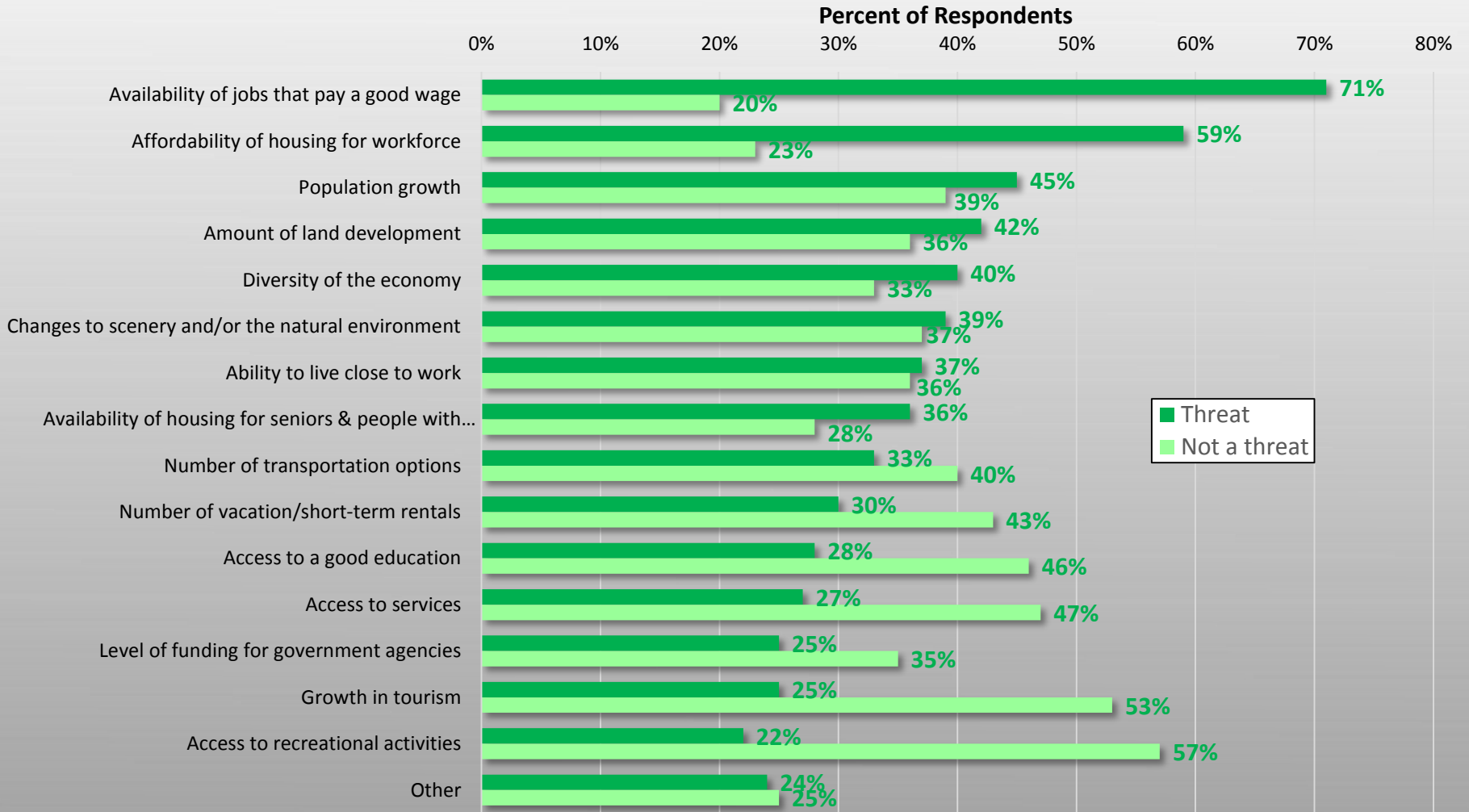
## Reasons for Living in Region - by Length of Time in Area



Source: 2014 Housing and Quality of Life in the Teton/Yellowstone Region Survey.

Agree=sum of 4 (agree) and 5 (strongly agree) responses.

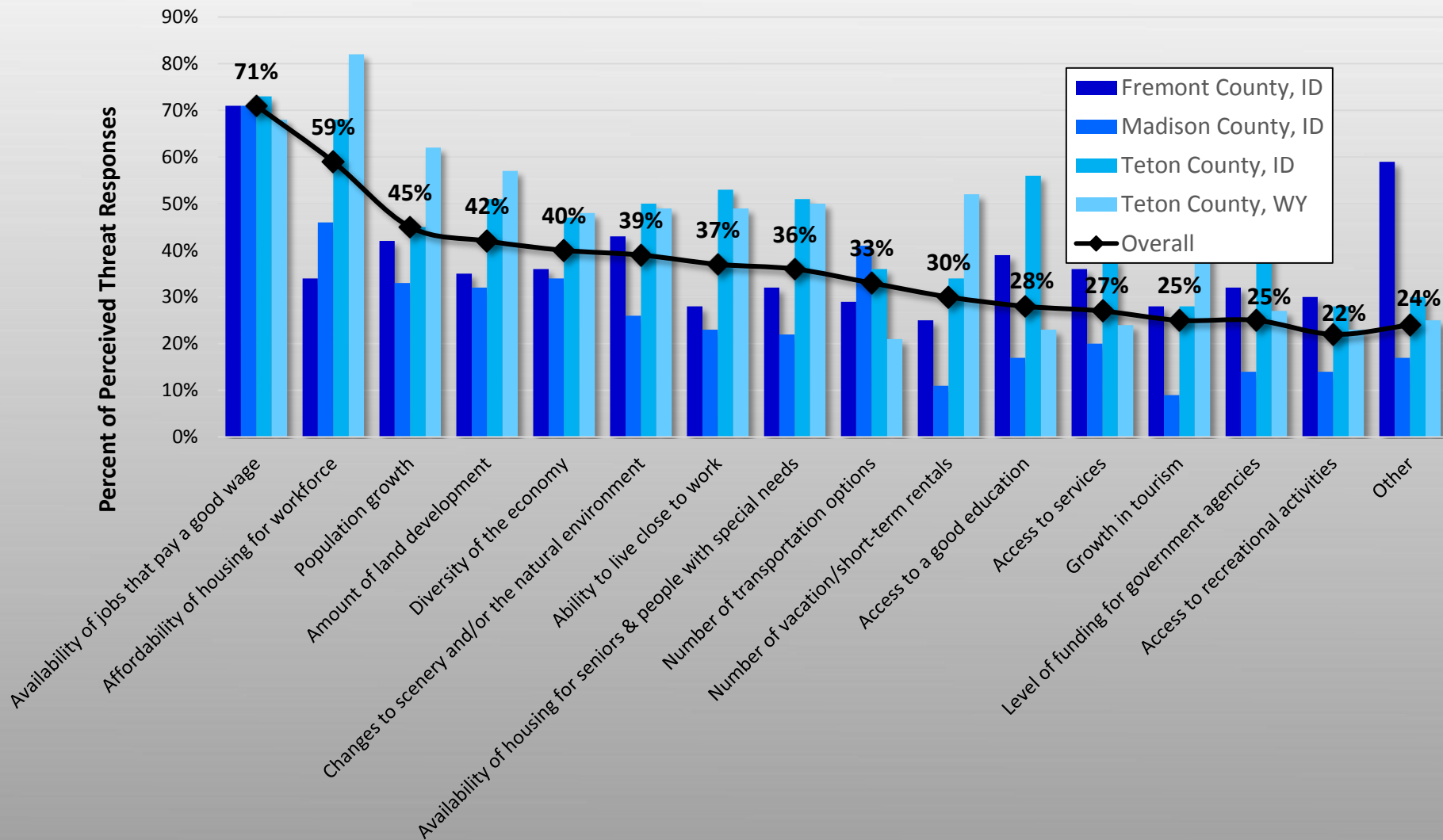
# Threats to Quality of Life in Region - Overall



Threat= sum of 4 (a moderate threat) and 5 (a serious threat) responses; not a threat=sum of 2 (a minor threat) and 1 (not a threat) responses.

Source: 2014 Housing and Quality of Life in the Teton/Yellowstone Region Survey.

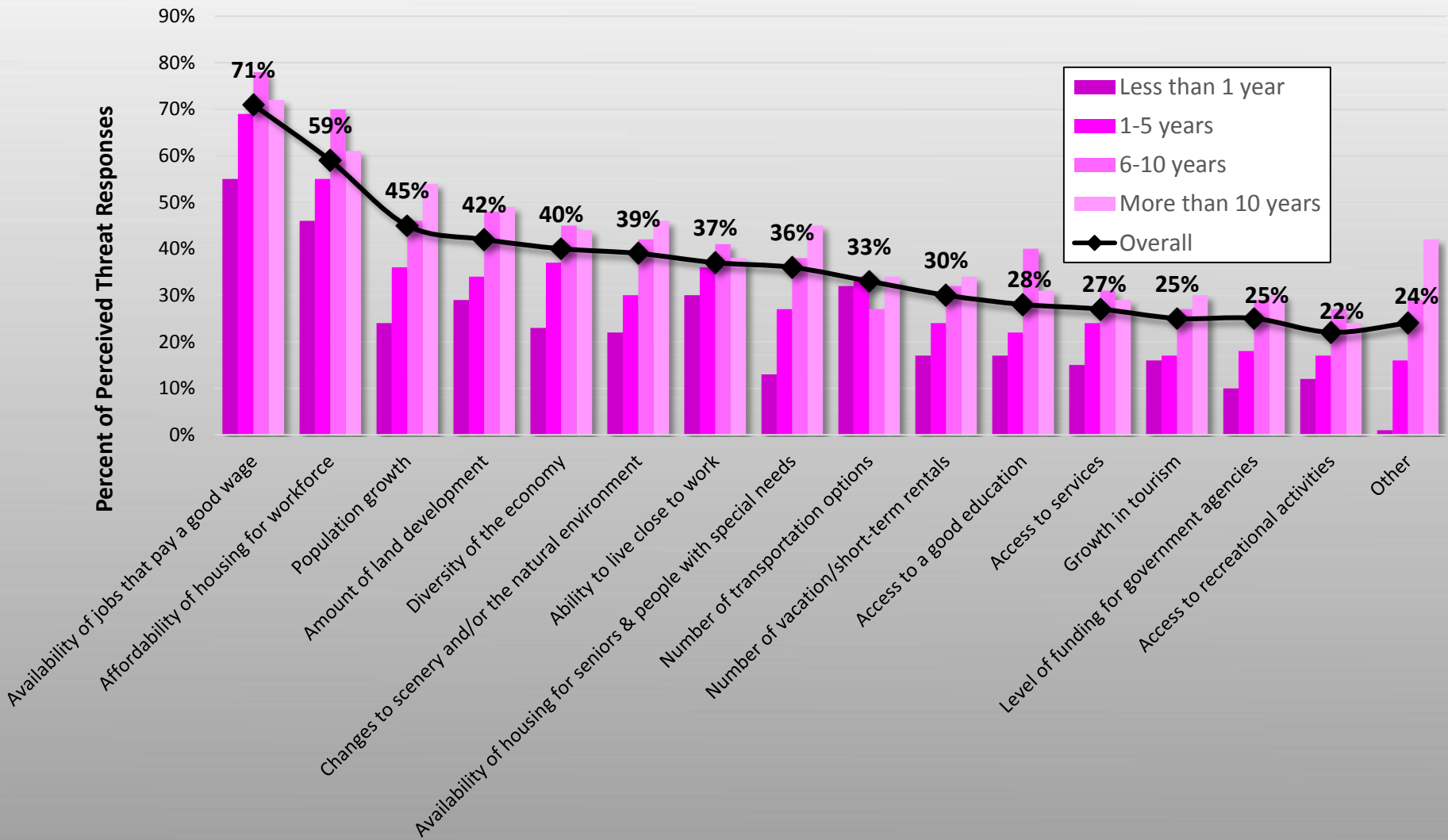
## Threats to Quality of Life in Region - by County



Source: 2014 Housing and Quality of Life in the Teton/Yellowstone Region Survey.

Threat= sum of 4 (a moderate threat) and 5 (a serious threat) responses.

## Threats to Quality of Life in Region - by Length of Time in Area



Source: 2014 Housing and Quality of Life in the Teton/Yellowstone Region Survey.

Threat= sum of 4 (a moderate threat) and 5 (a serious threat) responses.