



**TETON VIEW
REGIONAL PLAN**

for sustainable development

APRIL 2015

The work that provided the basis for this publication was supported by funding under an award with the U.S. Department of Housing and Urban Development. The substance and findings of the work are dedicated to the public. The author and publisher are solely responsible for the accuracy of the statements and interpretations contained in this publication. Such interpretations do not necessarily reflect the views of the Government.





Preface



*Sustainable communities
partnership*



On June 16, 2009, the U.S. Department of Housing and Urban Development (HUD), the U.S. Department of Transportation (DOT) and the U.S. Environmental Protection Agency (EPA) joined together to help communities nationwide improve access to affordable housing, increase transportation options, and lower transportation costs, all while protecting the environment. This “Sustainable Communities Partnership” identified six livability principles that would form a framework for the variety of funding programs that each agency intended to design over a multi-year period. These principles are:

- Provide more transportation choices
- Provide equitable, affordable housing
- Enhance economic competitiveness
- Support existing communities
- Coordinate policies and leverage investment
- Value communities and neighborhoods



The Sustainable Communities Regional Planning Grant program was launched by HUD in 2010 to encourage cities and counties to collaborate on studies related to regional land use, affordable housing, economic development, community vitality, food equity, public transportation and environmental quality. The grants also provided for training and technical assistance for local communities as means to build their resilience for the future.

In November 2011, the Western Greater Yellowstone Consortium (Consortium) was awarded a \$1.5 million HUD grant and launched its three-year planning process in February 2012. The four counties that comprised the consortium were Fremont, Madison and Teton counties, Idaho, and Teton County, Wyoming. Additional Consortium members included the Idaho cities of Island Park, Ashton, St. Anthony, Rexburg, Driggs, and Victor, plus the Town of Jackson, Wyoming. The public land management

agencies that signed onto the Consortium were the Caribou-Targhee and Bridger-Teton national forests, the U.S. Department of the Interior (USDI) Bureau of Land Management (BLM) Upper Snake River District, and the Idaho Department of Lands. The Yellowstone Business Partnership (now dissolved) and the Ashton Community Foundation participated as nonprofit partners in the Consortium. As the original applicant for the HUD Grant, Fremont County served in a leadership role and handled project management and grant administration.

The findings, conclusions and recommendations of some 20 research studies and data assessments were integrated into a draft document that received public scrutiny in February/March 2015. The final “Teton View” Regional Plan profiles 25 high-priority community-scale projects and multi-sector initiatives to be led voluntarily by local cities, counties and organizations. An additional 35 projects are summarized that may be implemented by localities over the long-term.

Over the past three years Consortium members have focused on what the region shares in common while respecting the varied economic, political and cultural views of each community. The group has accepted the reality of differing perspectives across the two states and four counties, and presents this Plan as a voluntary, “livability roadmap” that will guide each jurisdiction in its future development. The Plan outlines parallel paths that each locality may travel independently, or through coordinated, region-wide implementation.

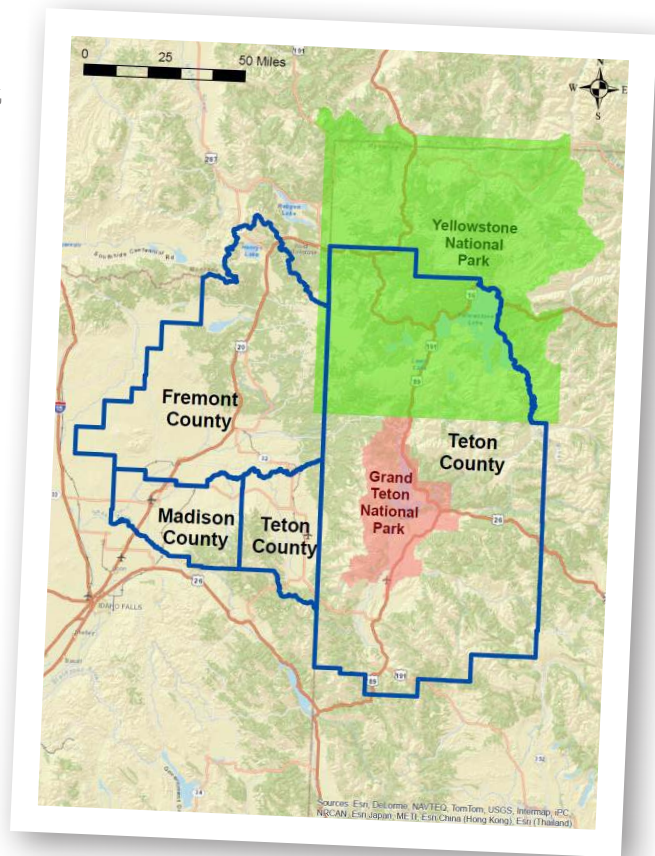




Table of Contents

Section One. **BECAUSE WE LEAD REGIONAL LIVES 1**

The Plan's Guiding Documents	4
Navigating the Regional Plan	5
About Sustainability Indicators	8
Public Participation Requirements and Philosophy	14

Section Two. **THE TETON VIEW LANDSCAPE AND ITS PEOPLE 21**

What Lies Beneath	23
Forests, Meadows and Wildlife	29
Population of the Teton View Region	32

Section Three. **RESILIENT COMMUNITIES 41**

Chapter 1 – Distinctive Major Cities	43
Chapter 2 – Our Small Cities	67
Chapter 3 – Vital Connections	97

Section Four. **PRODUCTIVE LANDSCAPES 117**

Chapter 4 – Our Agricultural Heritage	119
Chapter 5 – Wildlife, Public Lands and Special Sites	147
Chapter 6 – Four-Season Recreation	172

Section Five. **SUPPLEMENTAL MATERIALS 197**

Summary of Implementation Priorities and Partnerships	199
Greater Yellowstone Framework/Regional Plan Crosswalk	205
Resource Library/Appendices	207
References	208




TABLES

Table 1. Teton View Regional Population	33
Table 2. Percentage of Population by Age	36
Table 3. Population by Race	37
Table 4. Population of Hispanic/Latino Ethnicity by Area	38
Table 5. Tales of Two Cities (TTC) Implementation Priorities	54
Table 6. Staying the Course (SC) Implementation Priorities	83
Table 7. Better Together (BT) Implementation Priorities	106
Table 8. Land in farms, by type (acres) and county	121
Table 9. Public land in grazing (acres), by county	121
Table 10. Roots & Resilience (RR) Implementation Priorities	132-133
Table 11. Wonders & Wildlife (WW) Implementation Priorities	160
Table 12. Adventures for All (AA) Implementation Priorities	184
Table 13. GY Framework Comparison	206

FIGURES

Figure 1. Landscape Characters	6-7
Figure 2. IAP2's Public Participation Spectrum	14
Figure 3. Survey Results	19
Figure 4. Population Distribution in Teton View Region	32
Figure 5. Teton View Region Percentage of Population by Age	34
Figure 6. Distribution of Population by Hispanic/Latino Ethnicity	40
Figure 7. Distinctive Major Cities and their Micropolitan Areas Map	47
Figure 8. Small Cities Map	75
Figure 9. Regional Infrastructure Map	99
Figure 10. Land in Farms Chart	119
Figure 11. Agriculture Map	125
Figure 12. GYA Climate Action Plan "Definition of Success"	149
Figure 13. Wildlife and Public Lands Map	152
Figure 14. Annual Income to Counties & Participant Recreation Benefits	172
Figure 15. Summer Recreation Map	177
Figure 16. Winter Recreation Map	178

Section One.

-  Healthy Waters **10-11**
-  Housing and Transportation Affordability **12**
-  Regional Interconnectedness **13**

Section Three.

-  Employment Diversity **63**
-  Development in City Centers **64**
-  Roadway Connectivity Index **65**
-  Commute Time **66**
-  Housing Cost Burden **95**
-  Educational Attainment **96**
-  Regional Transit Connectivity **114**
-  Broadband Connectivity **115**
-  Wildland Urban Interface Development **116**

Section Four.

-  Value of Agricultural Products Sold **145**
-  Land in Farms **146**
-  Land Conservation **159**
-  Yellowstone Cutthroat Trout **170**
-  Elk Harvest **171**
-  Hunting and Fishing License Value **193**
-  Public Land Visitation **194-195**
-  Trail Miles **196**

