




TETON VIEW REGIONAL PLAN



Because we lead regional lives

FEBRUARY 2015



Setting Our Regional Priorities and Planning for Action

The final section of the Teton View Regional Plan lists 60 region-wide initiatives and community-level projects that are proposed in response to 20 research studies and assessments. Consortium partners are welcoming input from year-round residents, seasonal guests and those who enjoy recreating across this region. Summaries of each proposed project may be found in Section V. of the Regional Plan that is organized by regional “Character Areas”. Project profiles may also be found on six fact sheets that correspond to these character areas and that are available online as well as in print.

TALES OF TWO CITIES: Jackson, Wyoming, and Rexburg, Idaho

JACKSON MICROPOLITAN AREA

- TTC.1** Greater Yellowstone Framework Certification – Jackson Hole
- TTC.2** Code Updates for Fair Housing Compliance – Teton County, WY
- TTC.3** Jackson Hole Workforce Housing Initiative
- TTC.4** A Regional Transportation Authority for Jackson Hole

REXBURG MICROPOLITAN AREA

- TTC.5** A Madison-Fremont Housing Authority
- TTC.6** Fair Housing Policy and Procedures – Rexburg Metropolitan Area
- TTC.7** Code Updates for Fair Housing Compliance – Madison County
- TTC.8** Wastewater Treatment Demonstration Projects
- TTC.9** Rexburg Transit Feasibility Study

A TWO-CITY INITIATIVE

- TTC.10** The Jackson-Rexburg Workforce Connection



BETTER TOGETHER: Vital Connections for a Resilient Region

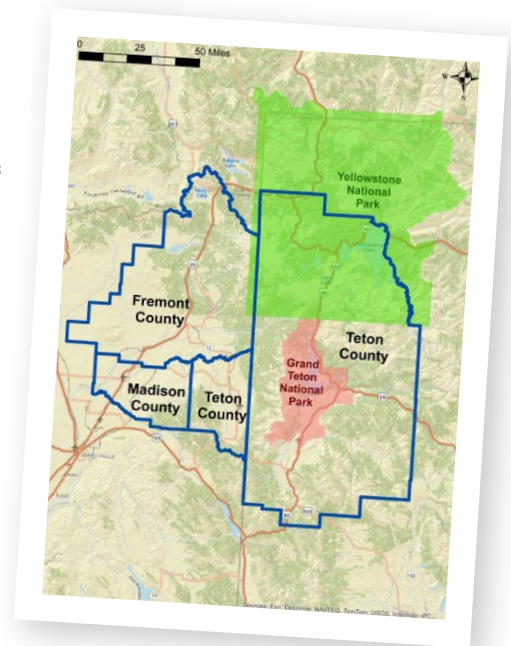
REGION-WIDE INITIATIVES

- BT.1** Teton View Model Development Code – A Regional Tool Kit
- BT.2** Regional Housing Initiative/Information Center
- BT.3** Efficient and Reduced Emission Travel
- BT.4** Integrated Marketing of Multi-Modal Transportation
- BT.5** Impact Hubs for the Region’s Entrepreneurs
- BT.6** Regional Equity in Broadband Access
- BT.7** Systems for Recycling and Materials Recovery
- BT.8** Prospects for Distributed Energy Generation

Working Together for a Sustainable Future

For the past three years, four adjacent counties and seven cities south and west of Yellowstone National Park have been working as a region to plan for their collective future. In 2012 the “Western Greater Yellowstone Consortium” was awarded a \$1.5 million Sustainable Communities Regional Planning Grant from the U.S. Department of Housing and Urban Development (HUD). The HUD grant has supported in-depth research to assess and analyze key regional issues and propose collaborative solutions.

The Teton View Regional Plan for Sustainable Development (Plan) has been designed to help city and county officials and public land managers better coordinate their land-use planning, resource management, and community development efforts for the region’s long-term benefit. The studies and tools developed during the planning process should help communities assess their current situations and effectively respond to changing socioeconomic and environmental conditions for years to come.



A Resource Library Open to All – www.sustainableyellowstone.org

A – Greater Yellowstone Framework for Sustainable Development

1. Greater Yellowstone Framework for Sustainable Development – Local Governments – Revision 2.0
2. Diagnosis of Land Development Regulations – Town of Jackson and Teton County, WY
3. Mountainside Village Greater Yellowstone Framework Certification

B – Model Development Code for the Teton View Region

C – Regional Housing Studies

1. Western Greater Yellowstone Area - Regional Analysis of Impediments
2. Western Greater Yellowstone Area - Housing Needs Assessment

D – Regional Mobility Studies

1. Multi-Modal Transportation Assessment and Development Strategy
2. Greater Yellowstone Trail Concept Plan
3. Graphics & Design Options for the Wayfinding System – City of Driggs
4. Complete Streets Intersection Design - City of Victor
5. Henry’s Fork Greenway River Crossing – City of St. Anthony

E – Economic Development Studies

1. Assessment of Teton View Agriculture for Local and Regional Markets
2. Teton County, Idaho Economic Development Plan
3. Fremont County Economic Development Strategy
4. Fremont County Community Economic Profile
5. Workforce Analysis of Rexburg, Idaho

F – Teton View Infrastructure Studies

1. Regional Recycling Study
2. Regional Broadband Study
3. Renewable Energy Feasibility Study
4. Best Practices Analysis – Green Economy



STAYING THE COURSE: A Renewed Commitment to Rural Places

staying

MULTI-CITY/MULTI-COUNTY INITIATIVES

- SC.1 Neighborhood Revitalization with Habitat for Humanity
- SC.2 Rural Rideshare and Local Shuttle Services
- SC.3 Walkability and Wayfinding Concepts
- SC.4 Main Street Matters – Downtown Revitalization
- SC.5 Collaborations for Business Retention/Recruitment
- SC.6 Our Rural Schools Challenge

FOCUS ON TETON VALLEY

- SC.7 A Teton Valley Housing Authority
- SC.8 Code Updates for Fair Housing Compliance – Teton County, ID

FOCUS ON FREMONT COUNTY

- SC.9 Code Updates for Fair Housing Compliance – Fremont County
- SC.10 Mobile Integrated Healthcare
- SC.11 Building Community across Fremont County
- SC.12 Welcoming Seniors

ROOTS & RESILIENCE: Building Upon Our Agricultural Heritage

REGION-WIDE INITIATIVES

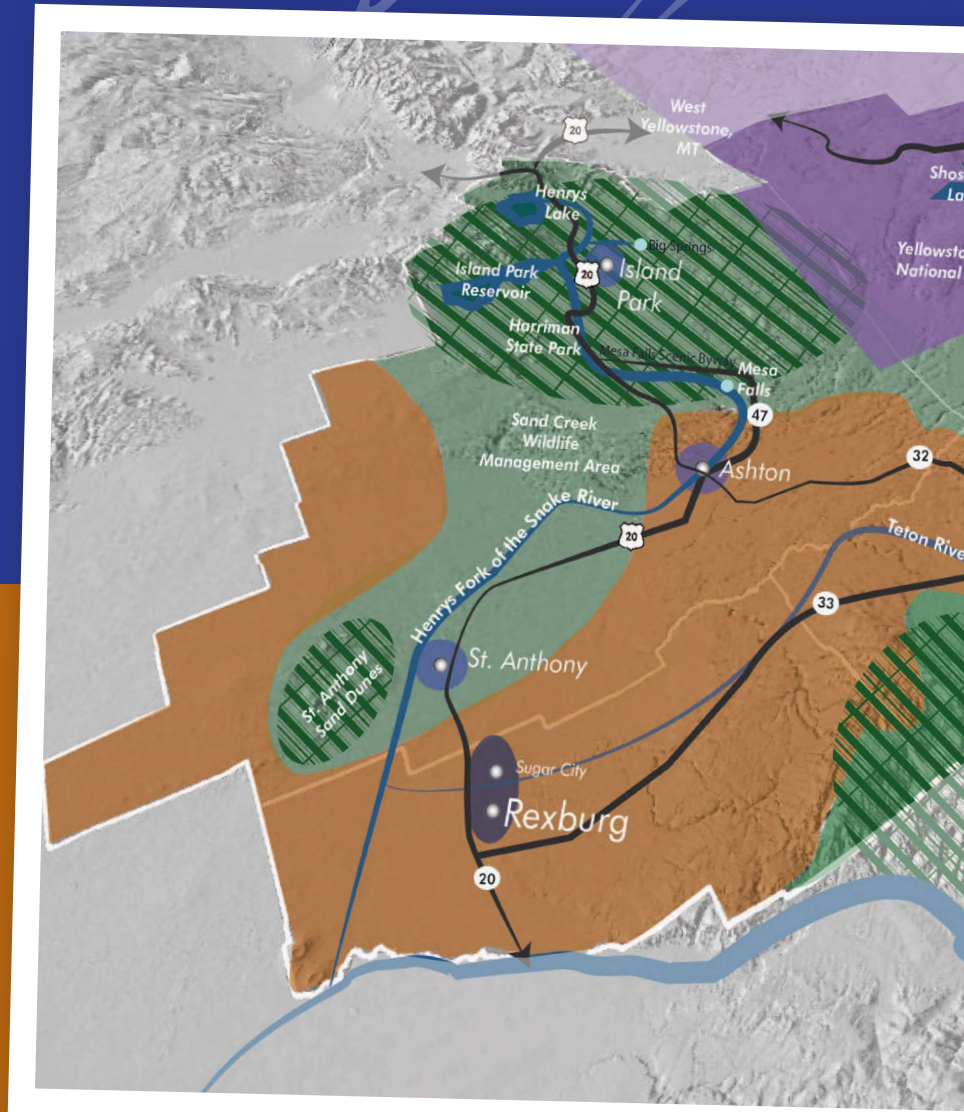
- RR.1 A Local Foods System to Meet Regional Demand
- RR.2 Infrastructure for Local Foods Processing
- RR.3 Cooperative Marketing and Distribution of Local Foods
- RR.4 Codes and Incentives to Protect Agricultural Uses/Lands
- RR.5 New Avenues for Value-Added Agriculture

AGRICULTURAL PROGRAMS

- RR.6 Maximizing Irrigation Water Supply – Policies & Practices
- RR.7 Collaborative Decision Making in Watershed Management
- RR.8 Soil Health Initiatives
- RR.9 New Crop Assessments
- RR.10 Cooperative Weed Management

COMMUNITY-SCALE PROJECTS

- RR.11 Agricultural Tourism Opportunities
- RR.12 Farmer's Market Coordination



roots

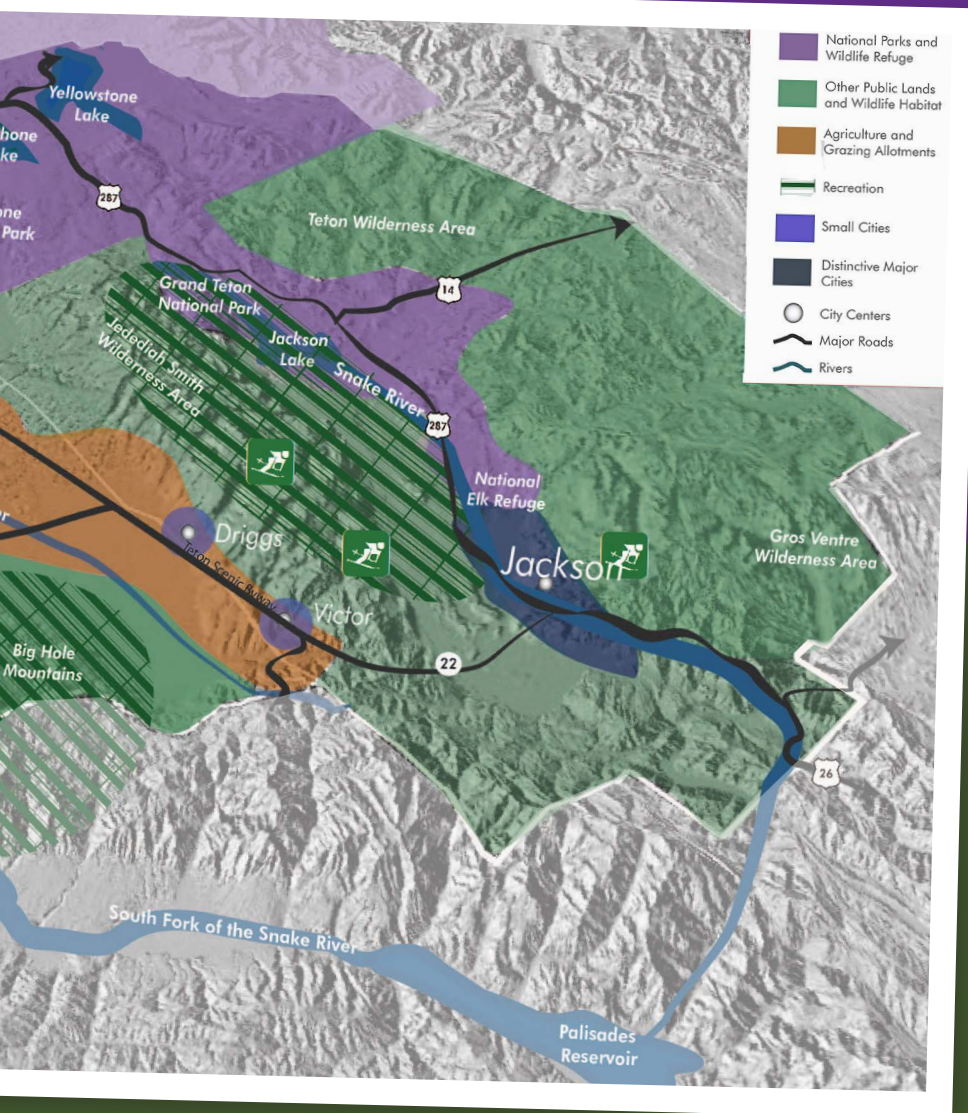
WONDERS & WILDLIFE: Stewarding our Public Lands and Resources

PUBLIC-PRIVATE COLLABORATIONS

- WW.1** “Windows to Wildlife” Initiative
- WW.2** Implementation of State Wildlife Plans
- WW.3** Safe Corridors for Wildlife Migration
- WW.4** Conserving Fish and Wildlife Habitat
- WW.5** Island Park Sustainable Fire Community

INTERAGENCY INITIATIVES

- WW.6** Greater Yellowstone Area: Ecosystem Health Projects
- WW.7** Sustainable Operations at Land Management Agencies
- WW.8** Increasing Mobility in Our National Parks



Wildlife

ADVENTURES FOR ALL: Four-Season Recreation Opportunities

REGION-WIDE INITIATIVES

- AA.1** Greater Yellowstone Trail Concept Plan
- AA.2** Economic Potential of Adventure Tourism
- AA.3** Retrofitting Recreation Facilities for All-Season Use

- AA.4** Accommodating New Recreation Technologies
- AA.5** Seasonal Employee Housing in Resort Areas
- AA.6** Recreation Services Business Network
- AA.7** Coordinating Marketing to the Geo- and Adventure Traveler

COMMUNITY-SCALE PROJECTS

- AA.8** Henry's Fork Greenway Enhancements – St. Anthony
- AA.9** Island Park Visitor Information Center
- AA.10** Island Park Community/Conference Facilities - Feasibility Study

adventures

Time to Help the Consortium Partners Set Their Priorities!

March



March 9, 2015 Teton County, Wyoming
 4:00 – 7:00 pm Teton County Library, Auditorium Side B
 125 Virginia Lane - Jackson, WY

March 18, 2015 Madison County
 4:00 – 7:00 pm Madison County Library, Community Rm
 73 North Center - Rexburg, ID

March 12, 2015 Fremont County
 4:00 – 7:00 pm Ashton Community Center Gymnasium
 925 Main - Ashton, ID

March 19, 2015 Teton County, Idaho
 4:00 – 7:00 pm Victor Elementary School Auditorium
 43 East Center - Victor, ID

To preview the sections of the Teton View Regional Plan, go to: www.sustainablyellowstone.org

Printed versions of all studies may be viewed at the Fremont County Annex Building at 125 N. Bridge St., St. Anthony, ID

Questions? – Contact Janice Brown, Special Projects Manager – 208-624-4643; jabrown@co.fremont.id.us

The Deadline for Public Input on Project Priorities is March 22, 2015

