

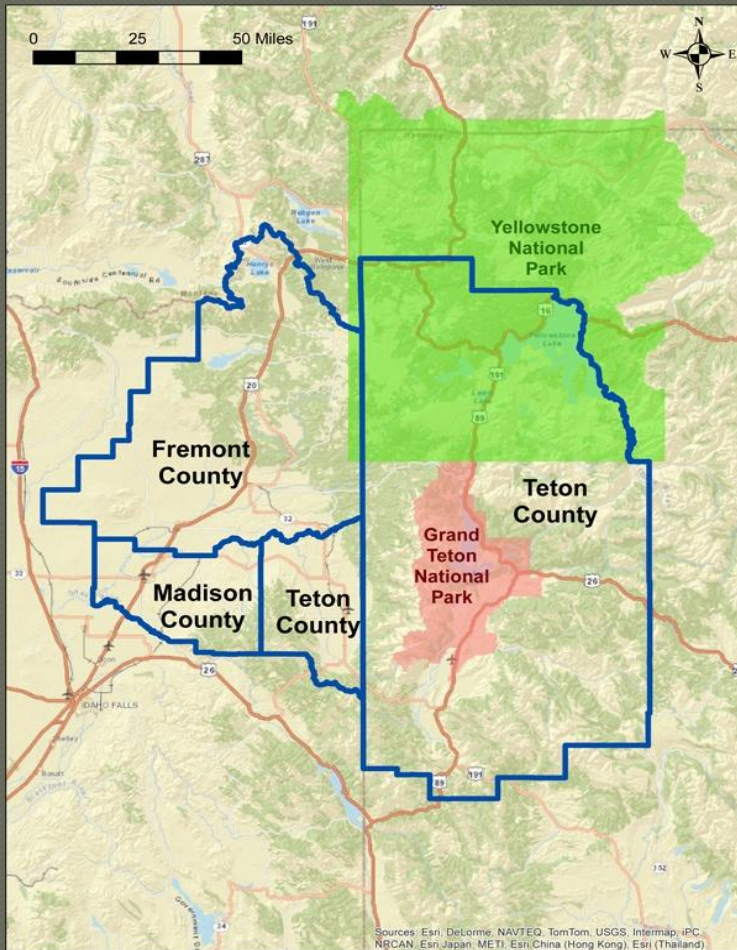
WESTERN GREATER YELLOWSTONE CONSORTIUM



Draft Regional Recycling Study

By
LBA ASSOCIATES,
INC.

What is WGYC?



Members

- Fremont, Madison, Teton County, ID; Teton County, WY
- Ashton, Driggs, Island Park, Rexburg, St. Anthony, Victor, ID; Jackson, WY
- Yellowstone Business Partnership
- BLM, USFS, ID Dept of State Lands

- Grant from HUD/EPA/DOT
- Partnership for Sustainable Communities

Study Drivers

- Goal = increase recycling w/ improvements that are cost-effective & accessible to all
- Address key barriers
 - Low population density
 - Reliance on drop-site collection (less recycling)
 - Absence of policy encouraging culture change
 - Lack of regional leadership

*“Problem size” = \$4.8M in landfill tip fees
& lost material revenues*

Stakeholder Process

○ Stakeholders include

- Local governments within WGYC
- Non-profits
- Private service providers (haulers, brokers, processors, markets, equipment manufacturers)
- Local governments outside of WGYC
 - Bannock, Bingham, Bonneville, Clark & Jefferson Counties

○ Stakeholder input

- Identify obstacles & opportunities
- Short-list “best bang” alternatives
- Review findings

WGYC website (stakeholder list & project documents)

<http://sustainableyellowstone.org/> - go to Projects, then study (page bottom)

Selection of “Best Bang” Improvements

1. Single-Stream MRF for WGYC Service Area
2. Single-Stream MRF for Expanded Service Area (WGYC + Bannock, Bingham, Bonneville, Clark & Jefferson Counties)
3. Dual-Stream MRF for WGYC Service Area
4. Regional Recycling Organization (to support MRF)

Note: commitments from stakeholders have not been obtained at this time – this work represents preliminary data collection & analysis to support future discussion only

MRF Design Assumptions

- “Public” MRF - “located” in Idaho Falls
- Processes 60% commingled/40% separated
- Capture rates increase from 30/35% in 2015 to 50/60% in 2030
- Costs in 2013 dollars
 - Construction costs based on 2030 quantities
 - Operating costs based on 2015 quantities
 - Contingency factor for conceptual design – no private sector profit margins
- Revenues based on market indices

As of March 2014, only draft analysis & report in place – final to be completed in May 2014

Cost Findings (draft)

COSTS/ REVENUES	SINGLE- STREAM MRF - WGYC	SINGLE-STREAM MRF – EXPANDED AREA	DUAL-STREAM MRF – WGYC AREA
Capital Cost	\$9.7M (\$322/ton)	\$17.0M (\$188/ton)	\$9.5M (\$379/ton)
Annual Cost			
Operating	\$1.0M	\$2.3M	\$0.9M
Debt Service	\$0.9M	\$1.6M	\$0.9M
Material Revenues	\$1.1M - \$1.5M	\$3.5M - \$4.9M	\$0.9M - \$1.3M
Net Annual	-\$0.8M to -\$0.4M	\$-0.4M to \$1.0M	-\$0.8M to -\$0.4M
Net Annual w/o Glass		-\$0.2M to \$1.1M	

Other Economic Findings (draft)

- Potential commercial LF tip fee savings in 2015
 - Single-stream/WGYC - \$1.0M
 - Single-stream/Expanded - \$3.2M
 - Dual-Stream/WGYC - \$0.9M
- Job creation – 15 to 43 new jobs (MRF operations only)

Environmental Findings (draft)

- Diverted Tons/Year (2015 to 2030)
 - Single-Stream/WGYC – 13.4k to 30k
 - Single-Stream/Expanded – 42.6k to 90.4k
 - Dual-Stream/WGYC – 11.5k to 25k
- Diversion Rates
 - Of recyclables in MSW stream – 50% to 60% by 2030
 - Of overall MSW stream (recycling only) – 18% to 21%
- Greenhouse gas emission reductions
 - 53k to 394k mtCO²e
 - Equals the emissions of 10k to 35k cars

New Recycling Organization

- Type/function - depends who owns/operates MRF
- If public facility – more formal organization may be warranted
 - JPA (Idaho solid waste district)
 - Others – IGA, NPO
- Key needs
 - Regional leadership
 - Ability to capitalize/operate (support) infrastructure
 - Establish regional (encourage local) policy/programs

Needed Next Steps

○ Preliminary

- Determine size of region
- Establish waste diversion goals
- Collect better data
- Verify cost impacts at local level

○ Encourage multi-sector partnerships

- Determine recycling organization need & develop
- Conduct MRF final design & costs
- Establish funding & revenue-sharing strategy
- Evaluate local policy & regional outreach programs

Final Observations

- ◉ Need to turn \$4.8M “loss” into driver for change
- ◉ Need to collaborate broadly
- ◉ Need immediate champions
- ◉ Deal-breaker if local governments don't work together

Study Conclusion

- Collect stakeholder input on draft in March & April – up-coming telecons/mtgs
 - All input welcome from any stakeholder
- Finalize report (May 2014)



Contact Laurie
Batchelder Adams at
(303) 733-7943 or
laurie@lbaassoc.com