

Multi-Modal Transportation Assessment and Development Strategy



January 8, 2014 Victor City Council Meeting

Connect Our Consortium Counties

The Linx Regional Transportation Co-op is committed to improving mobility within and between consortium cities and counties. This should help strengthen our local economies and better connect us to the entire Greater Yellowstone region.

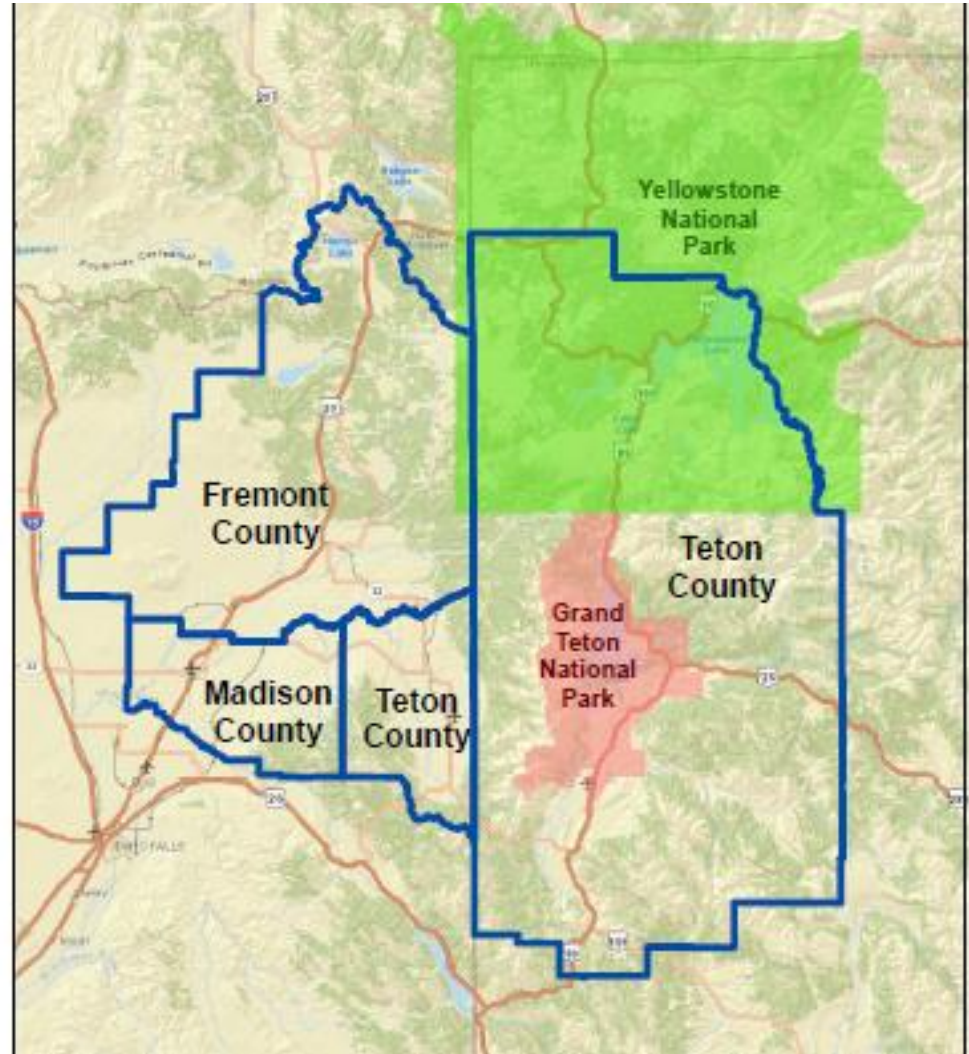


Table of Contents – Watch for more Online Postings during January

- Region's Demographics & Destinations
- Region's Mobility Planning Resources
- An Interactive Mapping Tool on ArcGIS (*Chapter 3*)
- Four Initiatives to Develop and Plan to Implement
 - Regional Transportation System
 - Integrated Recreational Trails Network (*Chapter 5*)
 - Collaborative Marketing of Multi-Modal Transportation
 - Energy-Efficient, Low-Emission Travel
- Summary of Recommendations & M2 Strategy

Initiative 1 – An Incremental Approach to Building Our Public Transit System

- Support Teton Valley infrastructure projects and better coordinate plans with TVTAC
 - Victor Park & Ride
 - Multi-Modal Hub (Victor Depot plans?)
- Intercity Connections in All Directions
 - Salt Lake Express awarded Intercity Bus Funds in Idaho
 - Linx to apply for 5311 funds for 2015 Rexburg- Teton Valley -Jackson route with north-south connections through Fremont County and West Yellowstone



JACKSON

START

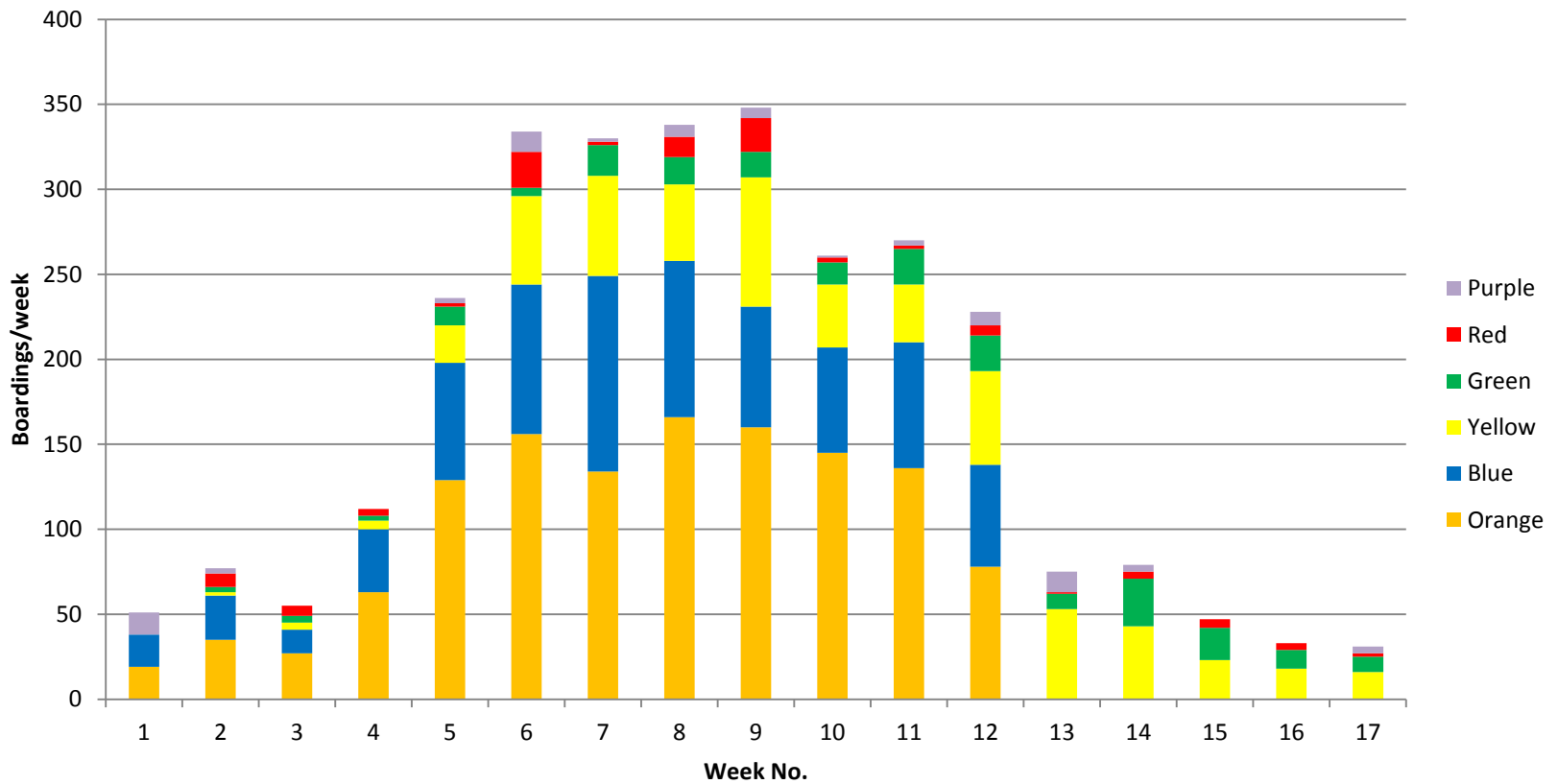
Public Transportation
SOUTHERN TETON AREA RAPID TRANSIT

START
Public Transportation

START

Total Ridership Peaked at 350/wk

2905 Boardings over 119 Days



2014 WYDOT Intercity Bus Grant

- Proposed Routes and Schedules – 116-day season
 - Five routes; 628 daily miles eligible for reimbursement
 - To win bid, Linx providers would need to have larger capacity ADA-compliant buses available
 - Tickets to be sold online by overall route, not by segment
- Budget Features
 - \$285,310 total project cost (w/o YNP employee service)
 - \$192,006 funding request
 - \$93,304 in required matching funds
 - 20 Gateway Partners @ \$2,500 = \$50,000
 - \$38,000 in special grants and contributions

Initiative 2 – An Integrated, Regional Recreational Trails Network

- Appreciate Tim Adams/TVTAP participating
- Gaps total 59 mi to connect Jackson to West Yellowstone on a non-motorized network
- Cost estimates range from \$1.2M to \$29.5M
 - Teton Pass to ID/WY State line (6 mi)
 - Driggs to Tetonia (6 mi)
 - Ashton to Warm River (5 mi)
 - Warm River to Montana Line (30 mi)
 - Montana Line to West Yellowstone (12 mi)

Initiative 2 – Other Recommendations

- Coordinate with all counties and agencies on accommodating snow bikes and other emerging, trail-oriented sports
- Coordinate in design of multi-modal hubs
- Promote 1 & 2-wk destination Nordic packages that encompass 4-county region
- Design multi-modal travel itineraries and packages for youth; international travelers

Complete Streets Assessment

Joe Gilpin's Recommendations for Victor:

- Recognized challenges Victor faces with aging infrastructure and past planning decisions
- Encouraged joint transportation planning with Driggs & county and strengthening code, design standards and development regulations
- Still need to include results from technical assistance provided by Joe Gilpin to ITD

Initiative 3 – Collaborative Marketing of Multi-Modal Transportation

- Marketing strategies for building regional awareness
- Ridership figures and projected demand; defining the rider “archetype”
- Plans to update “one-stop” online trip planning and ticketing systems available to public transit providers in three states

Toll-Free Help Line – 877-454-5469

Call types	1550	
General park and bus questions	722	47%
Schedule Questions	559	36%
Noted as employees	85	5%
RVers	34	2%
Hiker/Biker	58	4%
Airport questions or destinations	90	6%
ADA questions	2	0%

Initiative 4 – Partnership for Energy-Efficient, Low-Emission Travel

- Yellowstone-Teton Clean Energy Coalition (YTCEC) programs for expanding use of alternative fuels and electric/hybrid vehicles
- Regional incentives for carpooling, ride-sharing, wider use of “We-Cars”
- Idle-free policies; educational programs for commercial drivers and government fleets

Scenario Planning Tool & Next Steps

- Katie Wilson, ISU Master's Student, will orient you to project's Interactive Map
- Please review final draft of M2 Plan as chapters are posted through early January
- Consider match commitment of 2015 funds for support of midday Rexburg-Jackson route
- Gateway Partner - \$2,500 commitment for Yellowstone Gateway Connections

For More Information on RPSD

- Visit www.sustainableyellowstone.org
- Attend 2014 HFWC meetings to be focused on IP Caldera Futures Assessment
- Consortium Summit planned for March 2014
- Contact Brittany Skelton to give local input
- Contact Jan Brown, Special Projects Manager for Fremont County Planning & Building at:
 - jabrown@fremont.co.id.us
 - 208-624-4643 office; 559-3125 cell (in effect 1-26)