

Multi-Modal Transportation Assessment and Development Strategy



January 9, 2014 - Island Park City Council Meeting

Regional Plan for Sustainable Development

- \$1.5 million HUD grant: February 2012-April 2015
 - Consortium: 4 counties; 7 cities; 3 federal agencies; YBP
 - Monthly conference calls; quarterly meetings; annual summit
- Project Features
 - Model Development Code for voluntary use by local govts.
 - Multi Modal Assessment and Development Strategy
 - Fair Housing Equity Assessment/Analysis of Impediments
 - Economic Development Planning
 - Regional Recycling Feasibility Study
 - Island Park Caldera Comprehensive Resource Assessment

Technical Assistance Funds - \$100K

- Jeff Patlovich is IP representative on steering committee – can benefit from this funding
- Training & capacity building
- Support for specific technical projects
 - *Regional Broadband Study – City of Rexburg*
 - *Town of Jackson Code Audit*
 - *Victor Complete Streets Assistance*

Connect Our Consortium Counties

The Linx Regional Transportation Co-op is committed to improving mobility within and between consortium cities and counties. This should help strengthen our local economies and better connect us to the entire Greater Yellowstone region.

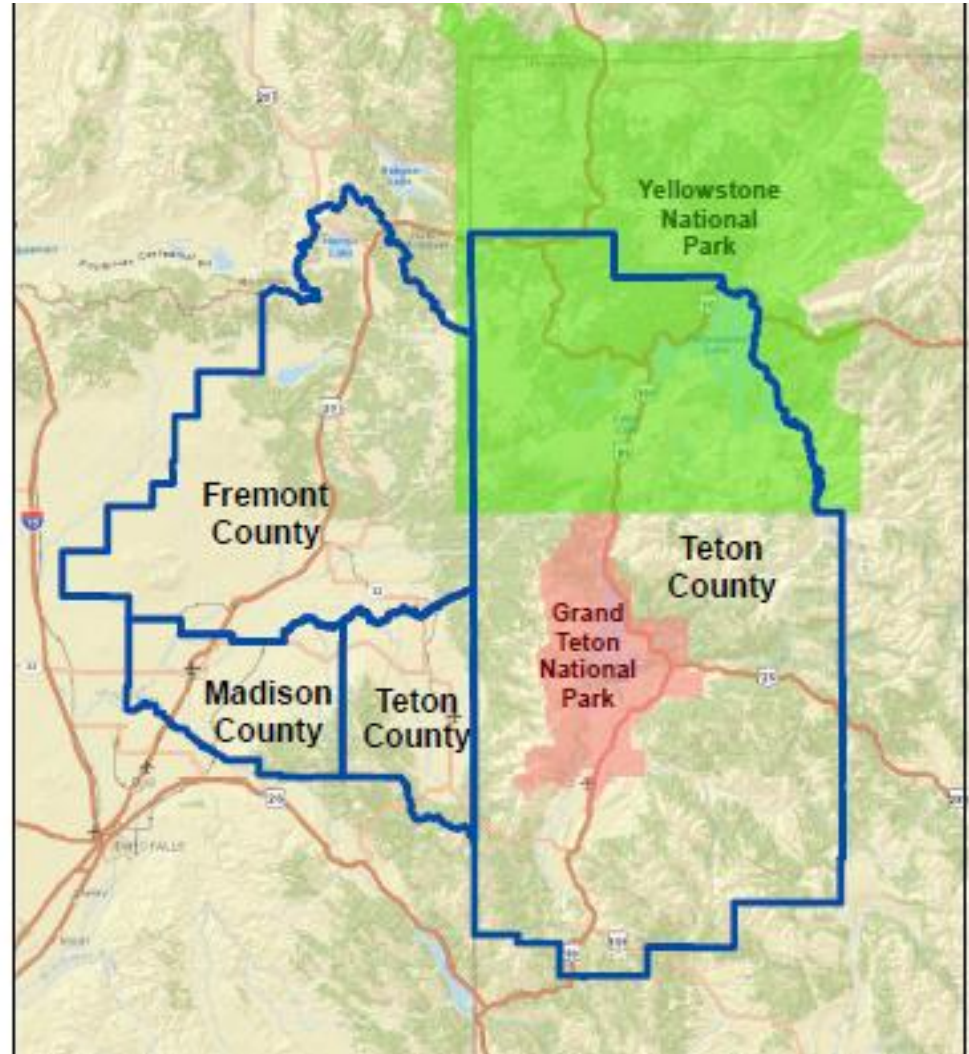


Table of Contents – Watch for more Online Postings during January

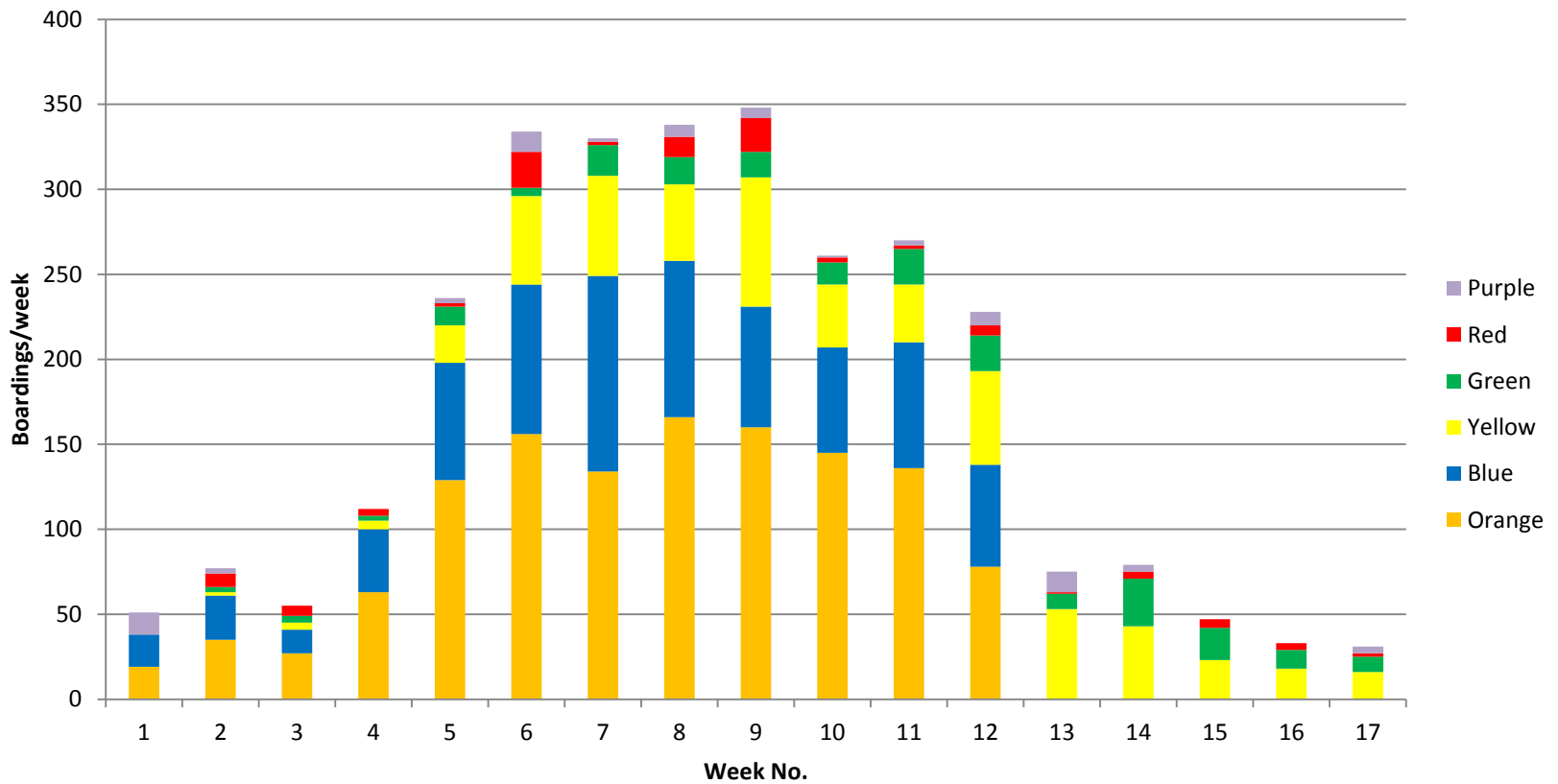
- Region's Demographics & Destinations
- Region's Mobility Planning Resources
- An Interactive Mapping Tool on ArcGIS (*Chapter 3*)
- Four Mobility Initiatives to Develop, Plan and Implement
 - Regional Transportation System
 - Integrated Recreational Trails Network (*Chapter 5*)
 - Collaborative Marketing of Multi-Modal Transportation
 - Energy-Efficient, Low-Emission Travel
- Summary of Recommendations & M2 Strategy

Initiative 1 – An Incremental Approach to Building Our Public Transit System

- Coordinate public transportation planning with Fremont County within impact area
 - SLE currently stops 2x/day at Mack's, Last Chance
 - Need input on additional service stops
- Intercity Connections in All Directions
 - Salt Lake Express awarded Intercity Bus Funds in Idaho
 - Linx has applied for 5311 funds for 2015 Rexburg- Teton Valley -Jackson route with north-south connections through Fremont County up to West Yellowstone

Total Ridership Peaked at 350/wk

2905 Boardings over 119 Days



2014 WYDOT Intercity Bus Grant

- Proposed Routes and Schedules – 116-day season
 - Five routes; 628 daily miles eligible for reimbursement
 - To win bid, Linx providers would need to have larger capacity ADA-compliant buses available
 - Tickets to be sold online by overall route, not by segment
- Budget Features
 - \$285,310 total project cost (w/o YNP employee service)
 - \$192,006 funding request
 - \$93,304 in required matching funds
 - 20 Gateway Partners @ \$2,500 = \$50,000
 - \$38,000 in special grants and contributions

Initiative 2 – An Integrated, Regional Recreational Trails Network

- Appreciate Kyle Babbitt's role early in project
- Gaps in non-motorized network total 59 miles to connect Jackson to West Yellowstone
- Cost estimates range from \$1.2M to \$29.5M
 - Teton Pass to ID/WY State line (6 mi)
 - Driggs to Tetonia (6 mi)
 - Ashton to Warm River (5 mi)
 - Warm River to Montana Line (30 mi) – Fun Run Comm.?
 - Montana Line to West Yellowstone (12 mi)

Initiative 2 – Other Recommendations

- Coordinate with all counties and agencies on accommodating snow bikes and other emerging, trail-oriented sports
- Coordinate in design of multi-modal hubs
- Promote 1 & 2-wk destination Nordic packages that encompass 4-county region
- Design multi-modal travel itineraries and packages for youth; international travelers

Complete Streets Assessment

Joe Gilpin's Recommendations for Island Park:

- Continue to work with ITD when they are reviewing highway sections
- Pursue creation of a separate trail system in the right-of-way along the highway with improvements for summer bike travel

Initiative 3 – Collaborative Marketing of Multi-Modal Transportation

- Marketing strategies for building regional awareness
- Ridership figures and projected demand; defining the rider “archetype”
- Plans to update “one-stop” online trip planning and ticketing systems available to public transit providers in three states

Toll-Free Help Line – 877-454-5469

Call types	1550	
General park and bus questions	722	47%
Schedule Questions	559	36%
Noted as employees	85	5%
RVers	34	2%
Hiker/Biker	58	4%
Airport questions or destinations	90	6%
ADA questions	2	0%

Initiative 4 – Partnership for Energy-Efficient, Low-Emission Travel

- Yellowstone-Teton Clean Energy Coalition (YTCEC) programs for expanding use of alternative fuels and electric/hybrid vehicles
- Regional incentives for carpooling, ride-sharing, wider use of “We-Cars”
- Idle-free policies; educational programs for commercial drivers and government fleets

For More Information on RPSD

- Katie Wilson, Recent ISU Graduate and IP property owner, will orient you to project's Interactive Map
- Visit www.sustainableyellowstone.org
- Attend 2014 HFWC meetings to be focused on IP Caldera Resource Assessment/Futures Study
- Consortium Summit planned for March 2014
- Contact Jan Brown, Special Projects Manager for Fremont County Planning & Building at:
 - jabrown@co.fremont.id.us
 - 208-624-4643 office; 559-3125 cell (in effect 1-26)