

Multi-Modal Transportation Assessment and Development Strategy



January 23, 2014 – St. Anthony City Council Meeting

Regional Plan for Sustainable Development

- \$1.5 million HUD grant: February 2012-January 2015
 - Consortium: 4 counties; 7 cities; 3 federal agencies; YBP
 - Monthly conference calls; quarterly meetings; annual summit
- Project Features
 - Model Development Code for voluntary use by local govts.
 - Multi-Modal Assessment and Development Strategy
 - Fair Housing Equity Assessment/Analysis of Impediments
 - Economic Development Planning
 - Regional Recycling System Feasibility Study
 - Island Park Caldera Comprehensive Resource Assessment

Connect Our Consortium Counties

The Linx Regional Transportation Co-op is committed to improving mobility within and between consortium cities and counties. This should help strengthen our local economies and better connect us to the entire Greater Yellowstone region.

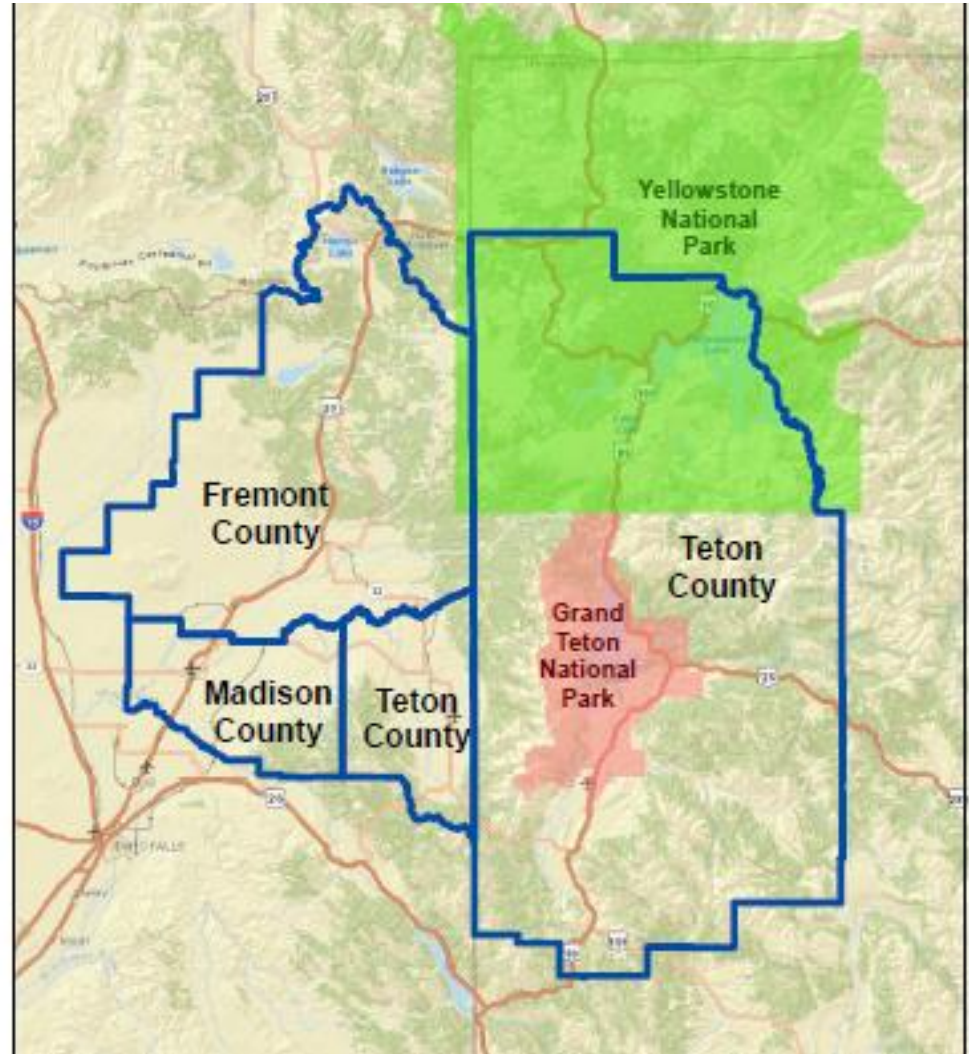


Table of Contents – Watch for more Online Postings during January

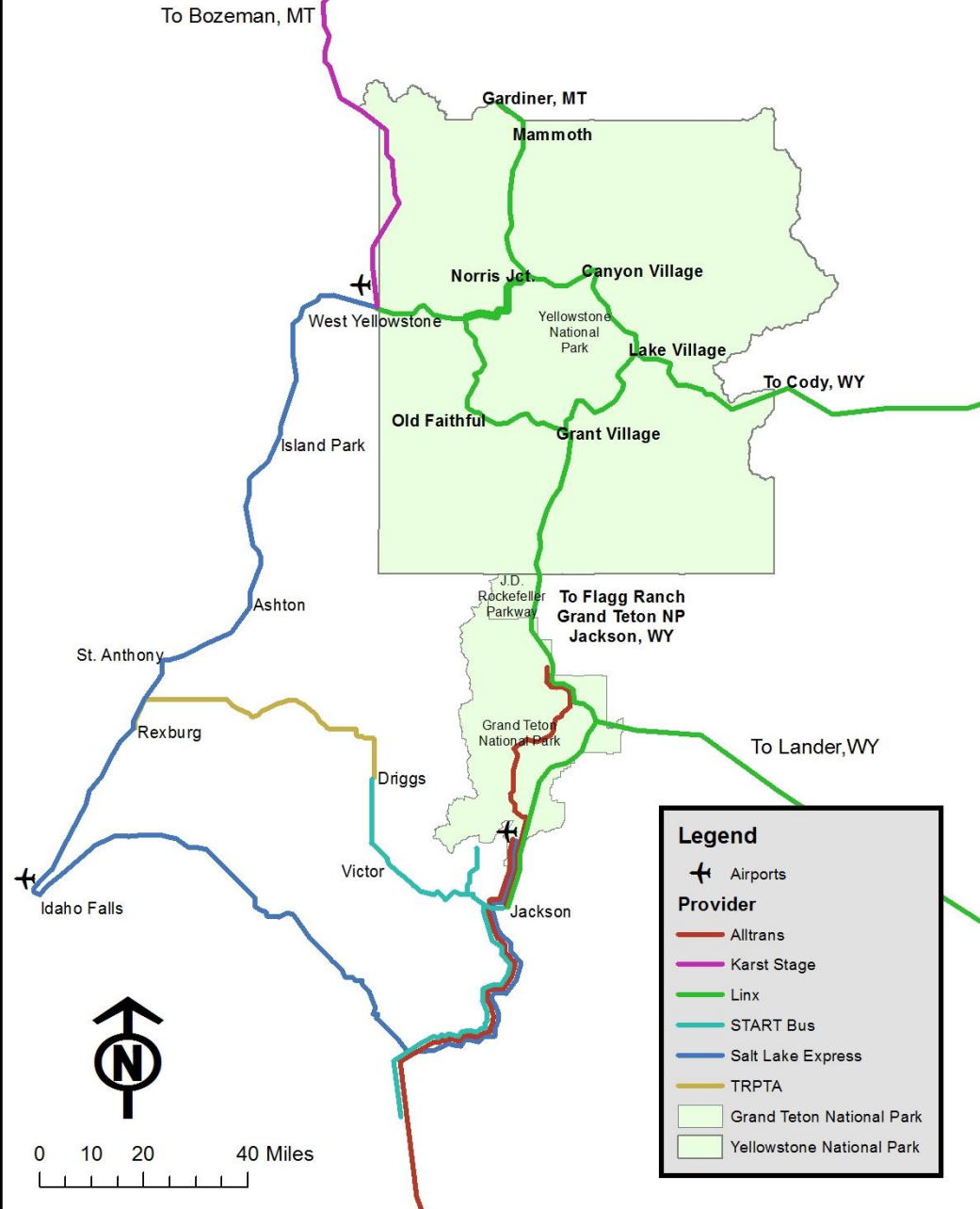
- Introduction v
- Region's Demographics & Destinations
- Region's Mobility Planning Resources
- An Interactive Mapping Tool on ArcGIS v
- Four Mobility Initiatives to Develop, Plan and Implement
 - Regional Transportation System v
 - Integrated Recreational Trails Network v
 - Collaborative Marketing of Multi-Modal Transportation
 - Energy-Efficient, Low-Emission Travel
- Summary of Recommendations & M2 Strategy

Initiative 1 – An Incremental Approach to Building Our Public Transit System

- Support Intra-city Funding Requests to Dist. 6
 - Does TRPTA’s demand-response service fill the need?
- Intercity Connections in All Directions
 - Salt Lake Express was awarded Intercity Bus Funds in Idaho
 - Twice daily round-trip service to West Yellowstone; 9 daily departures south from Rexburg
 - Midday Rexburg- Teton Valley -Jackson route connecting with Salt Lake Express forms an “Upper Valley Connector” service to be piloted in summer 2015

PUBLIC TRANSPORTATION PROVIDERS

Summer Routes



Rexburg Service	Frequency	Leave REXBURG	Arrive DRIGGS	Leave DRIGGS	Arrive REXBURG
Commuter TRPTA-1	M-F	6:30 am	7:45 am	8:00 am	9:15 am
U-Valley Connector	Seven Days – Deviated Fixed-Route Service	11:15 am	12:30 pm	1:00 pm	2:15 pm
Commuter TRPTA-2	M-F	3:30 pm	3:45 pm	5:00 pm	6:15 pm
U-Valley Connector	Seven Days Deviated Fixed-Route Service	8:15 pm	9:30 pm	10:00 pm	11:15 pm

Teton Service	Frequency	Leave JACKSON	Arrive DRIGGS	Leave DRIGGS	Arrive JACKSON
START Bus Commuter	M-F	--	--	6:25 am 7:05 am	7:30 am 8:10 am
U-Valley Connector	Seven Days – Deviated Fixed-Route Service	11:30 am	12:40 pm	1:00 pm	2:10 pm
START Bus Commuter	M-F	3:35 pm 5:10 pm	4:40 pm 6:15 pm	--	--
U-Valley Connector	Seven Days – Deviated Fixed Route Service	8:30 pm	9:40 pm	10:00 pm	11:10 pm

DRAFT PILOT BUDGET

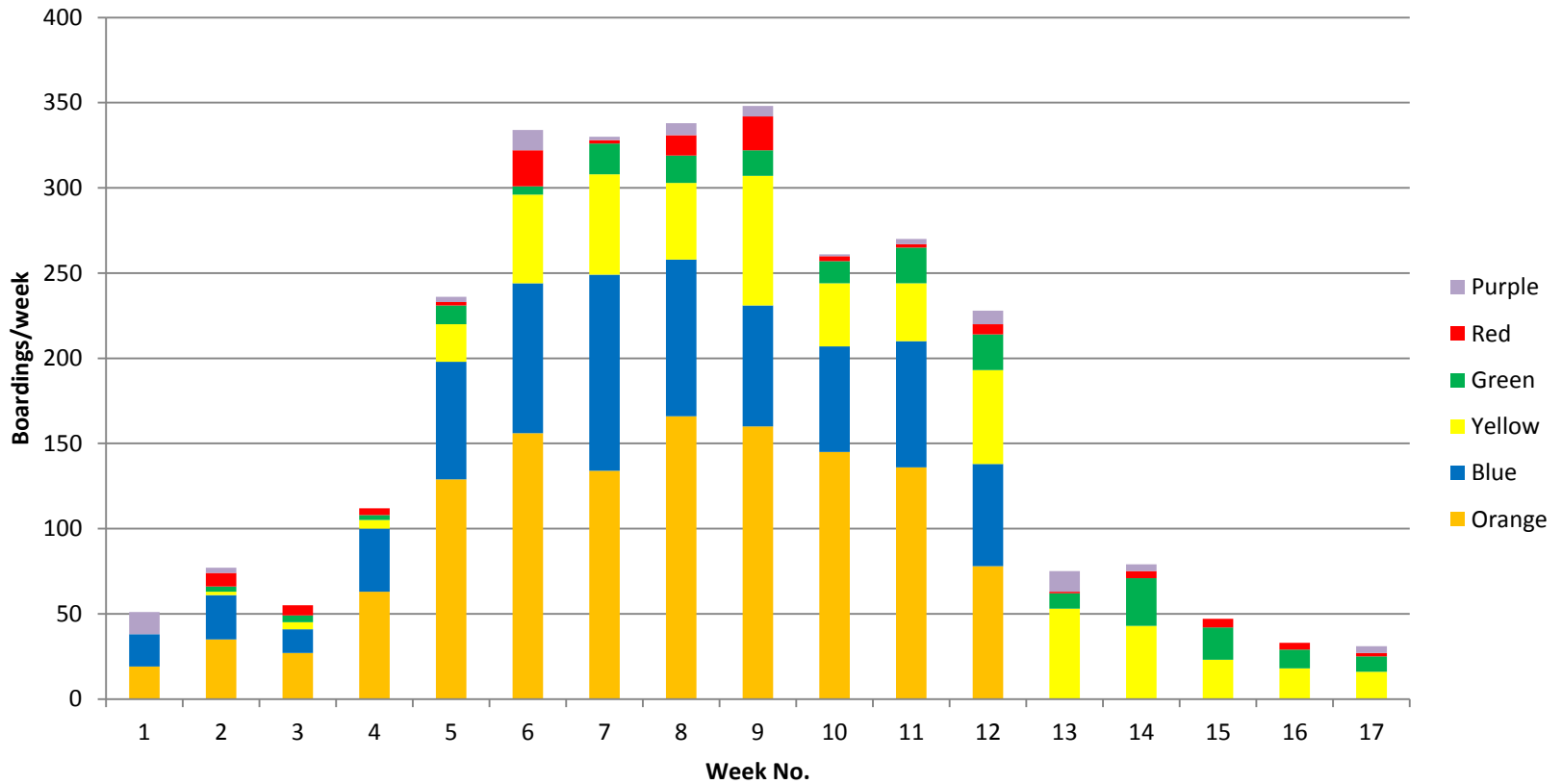
	Total	%	FTA	Match	
Purchased Transportation	98,400	57.5	56,580	41,820	328 miles/day @ \$2 = \$656 x 150 days
Rexburg-Driggs-Rexburg	58,800		33810	24990	Must be ADA compliant; deviated fixed route
Jackson-Driggs-Jackson	39,600		22770	16830	Must be ADA compliant; deviated fixed route
Linx Capital Costs	17,000	92	15,640	1360	
Mobility Management	5000		4600	400	Acquisition/Coordination of Transportation Services
Kiosks - 6 for ticketing, info	6000		5520	480	Rexburg (2), Driggs, Victor, Jackson , Island Park
Software and service fees	2500		2300	200	Linx Online Webstore
Bike Carriers (2)	2000		1840	160	Midwest Bus Corp.
Bus Stop Signs (Linx)	1500		1380	120	15 @ \$100
Project Administration	10,600	80	8480	2120	
Grant Administration-City	5000		4000	1000	Salaries, fringe, etc.
Marketing	5000		4000	1000	Bus schedules, posters, ad buys, etc.
Office Supplies	600		480	120	Postage, copying etc.
Totals	126,000		80,700	45,300	\$12,000 per county match request

2014 WYDOT Intercity Bus Grant

- Proposed Routes and Schedules – 116-day season
 - Five routes; 628 daily miles eligible for reimbursement
 - To win bid, Linx providers would need to have larger capacity ADA-compliant buses available
 - Tickets to be sold online by overall route, not by segment
- Budget Features
 - \$285,310 total project cost (w/o YNP employee service)
 - \$192,006 funding request
 - \$93,304 in required matching funds
 - 20 Gateway Partners @ \$2,500 = \$50,000
 - \$38,000 in special grants and contributions

Total Ridership Peaked at 350/wk

2905 Boardings over 119 Days



Initiative 2 – An Integrated, Regional Recreational Trails Network

- Recommended “Complete Streets” policies
 - Joe Gilpin’s report for Fremont County
- Recreational Trails Inventory
 - Henry’s Fork Greenway Trail System
 - St. Anthony Sand Dunes (BLM)
- Multi-modal N-S corridor paralleling US 20 or RR right-of-way that connects with above

Initiative 2 – Other Recommendations

- Coordinate with all counties and agencies on accommodating electric bikes, snow bikes and emerging, trail-oriented sports
- Coordinate in design of multi-modal hubs
- Promote destination snowmobile and Nordic packages for the 4-county region
- Design multi-modal travel itineraries and packages for youth; international travelers

Complete Streets Assessment

Joe Gilpin's Recommendations for St. Anthony:

- Great potential for a walkable, bikable city
 - Could convert Main St. to 3 lanes to make room for bike lanes & pedestrian improvements
 - City has foundation for a great trail system and could benefit from additional planning to assess all opportunities
- Consider HUD technical assistance funds

Initiative 3 – Collaborative Marketing of Multi-Modal Transportation

- Promote all of Fremont County destinations
- Marketing strategies for building regional awareness and support of public transit
- Ridership figures and projected demand; defining the rider “archetype”
- Plans to update “one-stop” online trip planning and ticketing systems available to public transit providers in three states

Toll-Free Help Line – 877-454-5469

Call types	1550	
General park and bus questions	722	47%
Schedule Questions	559	36%
Noted as employees	85	5%
RVers	34	2%
Hiker/Biker	58	4%
Airport questions or destinations	90	6%
ADA questions	2	0%

Initiative 4 – Partnership for Energy-Efficient, Low-Emission Travel

- Yellowstone-Teton Clean Energy Coalition (YTCEC) programs for expanding use of alternative fuels and electric/hybrid vehicles
- Regional incentives for carpooling, ride-sharing, wider use of “We-Cars”
- Idle-free policies; educational programs for commercial drivers and government fleets

Scenario Planning Tool & Next Steps

- Katie Wilson, ISU Master's Student, has developed the project's Interactive Map
- Please review final draft of M2 Plan as chapters are posted through end of January
- Requesting FY 2015 match commitment of \$1,500 for Upper Valley Connector pilot
- Consider being a Gateway Partner - \$2,500 for 2014 Yellowstone Gateway Connections

For More Information on RPSD

- Visit www.sustainableyellowstone.org
- 2014 HFWC meetings to be focused on IP Caldera Resource Assessment/Futures Study
- Consortium Summit planned for May 2014
- Contact Jan Brown, Special Projects Manager for Fremont County Planning & Building at:
 - jabrown@co.fremont.id.us
 - 208-624-4643 office; 559-3125 cell (1-26-14)

IP Caldera Assessment/Study Project Launch in Rexburg - February 18

- History of the National Monument Discussion
 - Jim Caswell, BLM Director under Bush Administration
 - Steve Woodruff, National Wildlife Federation – Missoula Office
 - Other regional conservation speaker(s)
- Overview of Anticipated, Independent Research - \$150,000 budgeted
- WIRE Project Meeting Topics and Approach
- Recruit Subcommittee Members; Discuss Travel Support Grants
- Finalize Meeting Schedule and Locations

Rest of Proposed 2014 Schedule

March 11 – Island Park	Winter Recreation
April 8 – Ashton	Land Use/Land Management Analysis
May 13 – Rexburg	Water Management and Aquatic Resources
June 10 – Island Park	Built Environment/Public Works & Infrastructure
July 8 – Ashton	Summer Recreation/Transportation Issues
Aug. 12-13 – Island Park	Terrestrial Resources – Timber, Range, Wildlife
Sept. 9 – Ashton	Cultural & Historic Values/Community Vitality
October 14 – Rexburg	Open Date if Needed
November 18 – Ashton	Annual Conference – Final Recommendations