

Multi-Modal Transportation Assessment and Development Strategy



January 21, 2014 – Driggs City Council Meeting

Regional Plan for Sustainable Development

- \$1.5 million HUD grant: February 2012-January 2015
 - Consortium: 4 counties; 7 cities; 3 federal agencies; YBP
 - Monthly conference calls; quarterly meetings; annual summit
- Project Features
 - Model Development Code for voluntary use by local govts.
 - Multi-Modal Assessment and Development Strategy
 - Fair Housing Equity Assessment/Analysis of Impediments
 - Economic Development Planning
 - Regional Recycling System Feasibility Study
 - Island Park Caldera Comprehensive Resource Assessment

Connect Our Consortium Counties

The Linx Regional Transportation Co-op is committed to improving mobility within and between consortium cities and counties. This should help strengthen our local economies and better connect us to the entire Greater Yellowstone region.

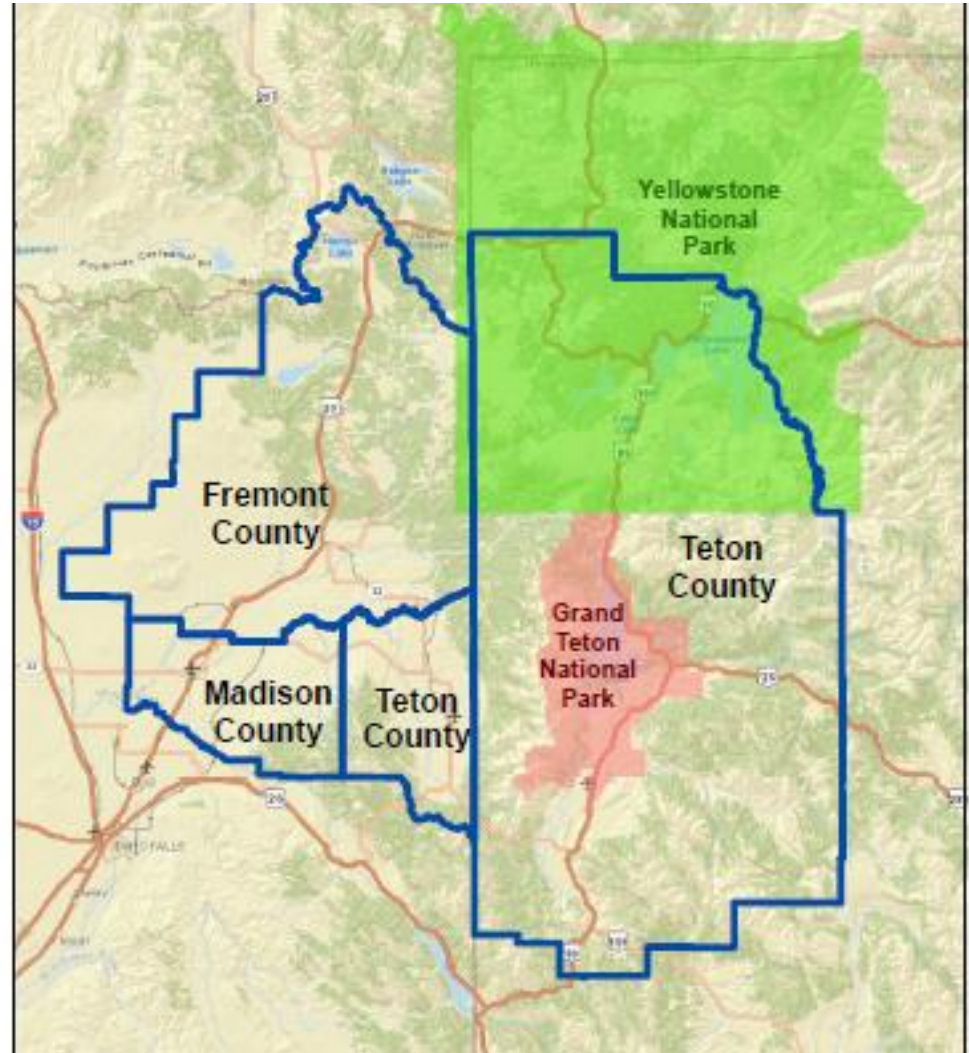


Table of Contents – Watch for more Online Postings during January

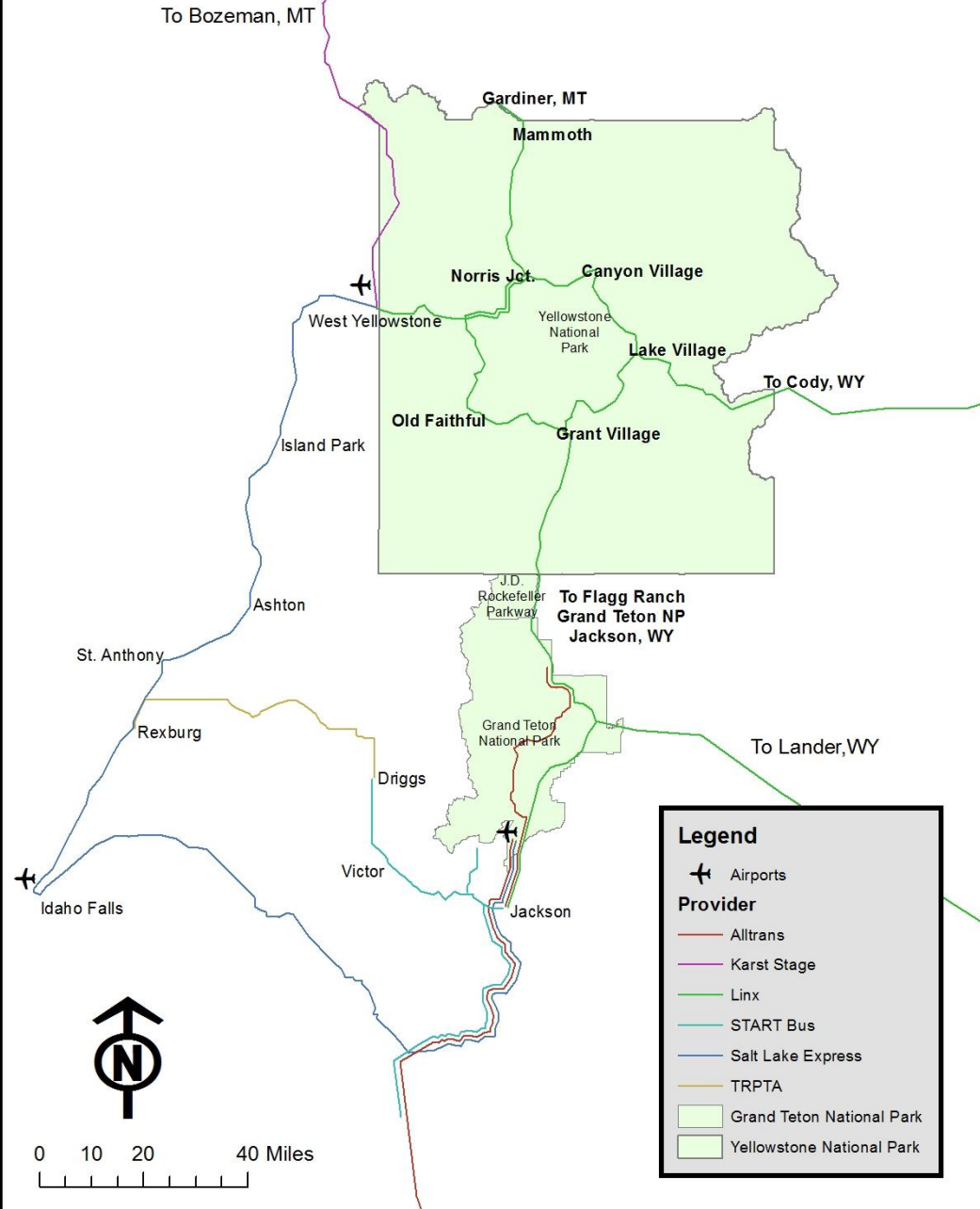
- Introduction v
- Region's Demographics & Destinations
- Region's Mobility Planning Resources
- An Interactive Mapping Tool on ArcGIS v
- Four Mobility Initiatives to Develop, Plan and Implement
 - Regional Transportation System v
 - Integrated Recreational Trails Network v
 - Collaborative Marketing of Multi-Modal Transportation
 - Energy-Efficient, Low-Emission Travel
- Summary of Recommendations & M2 Strategy

Initiative 1 – An Incremental Approach to Building Our Public Transit System

- Support Intra-city Funding Requests to Dist. 6
 - Grand Targhee Shuttle
 - Hatches Corner Park & Ride
 - Bus Storage Facility in Driggs
- Intercity Connections in All Directions
 - Salt Lake Express awarded Intercity Bus Funds in Idaho
 - START Bus Commuter service
 - Midday Rexburg- Teton Valley -Jackson route connecting with north-south connections up to West Yellowstone

PUBLIC TRANSPORTATION PROVIDERS

Summer Routes



Rexburg Service	Frequency	Leave REXBURG	Arrive DRIGGS	Leave DRIGGS	Arrive REXBURG
Commuter TRPTA-1	M-F	6:30 am	7:45 am	8:00 am	9:15 am
U-Valley Connector	Seven Days	11:30 am	12:45 pm	1:00 pm	2:15 pm
Commuter TRPTA-2	M-F	3:30 pm	3:45 pm	5:00 pm	6:15 pm
U-Valley Connector	M-F Only	6:00 pm	7:15 pm	7:30 pm	8:45 pm
U-Valley Connector	Sa-Su Only	8:00 pm	9:15 pm	9:30 pm	10:45 pm

Teton Service	Frequency	Leave JACKSON	Arrive DRIGGS	Leave DRIGGS	Arrive JACKSON
START Bus Commuter	M-F	--	--	6:25 am 7:05 am	7:30 am 8:10 am
U-Valley Connector	Seven Days	11:30 am	12:30 pm	1:00 pm	2:00 pm
START Bus Commuter	M-F	3:35 pm 5:10 pm	4:40 pm 6:15 pm	--	--
U-Valley Connector	Sat-Sun Only	8:00 pm	9:00 pm	9:30 pm	10:30 pm

DRAFT PILOT BUDGET

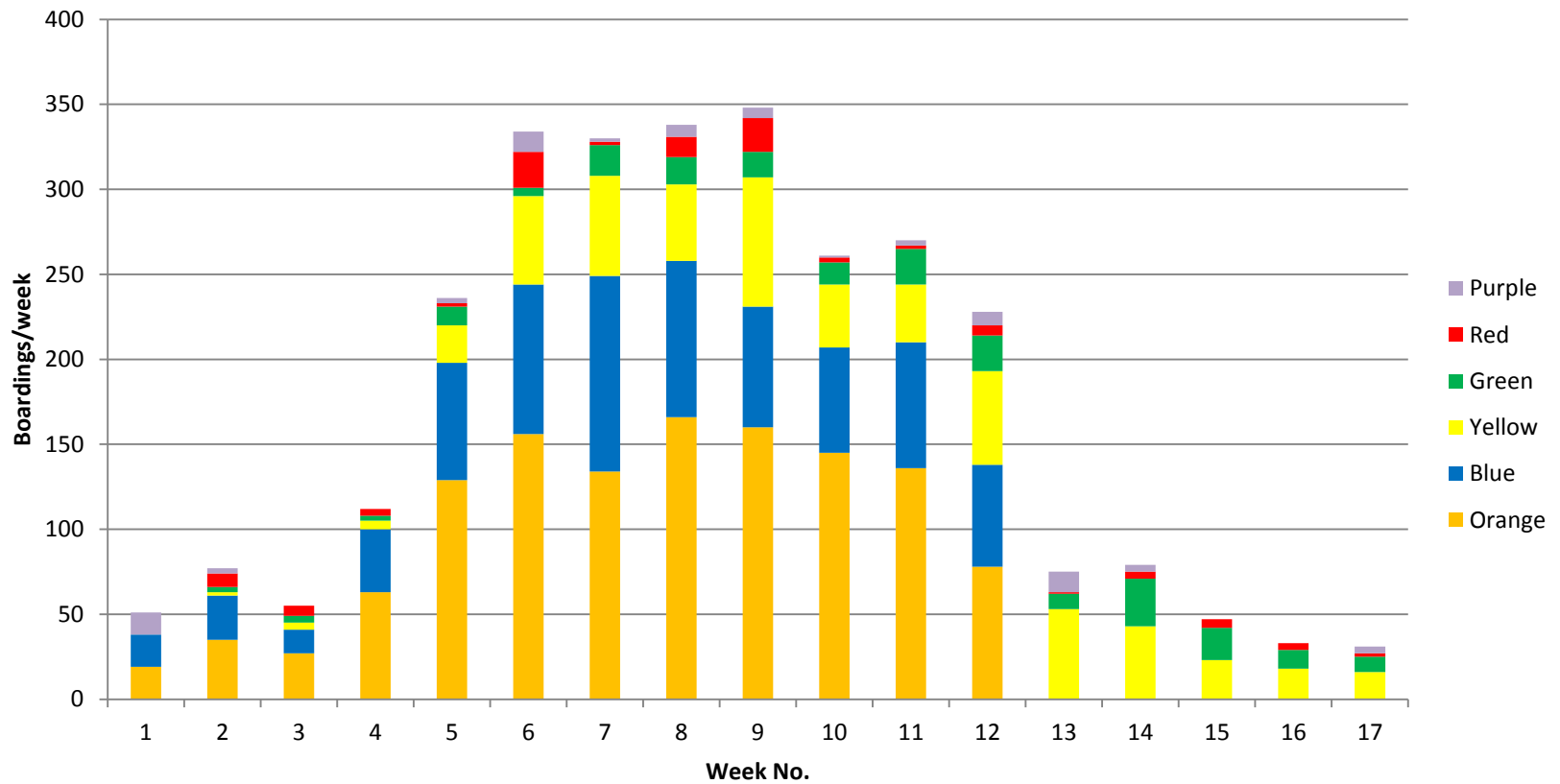
	Total		FTA	Match	
Purchased Transportation	77,400	58%	44,505	32,895	258 miles/day @ \$2 = \$516 x 150 days
Rexburg-Driggs-Rexburg					Must be ADA compliant; deviated fixed route?
Jackson-Driggs-Jackson					Add \$6100 (\$3508 FTA; \$2592 match) for weekend service between Driggs & Jax
Linx Capital Costs	17,000	92%	15,640	1360	
Mobility Management	5000		4600	400	Acquisition/Coordination of Transportation Services
Kiosks - 6 for ticketing, info	6000		5520	480	Rexburg (3), Driggs, Victor, Jackson (Home Ranch)
Software and service fees	2500		2300	200	Linx Online Webstore
Bike Carriers (2)	2000		1840	160	Midwest Bus Corp.
Bus Stop Signs (Linx)	1500		1380	120	10 @ \$100 plus installation
Project Administration	10,600	80%	8480	2120	
Grant Administration-City	5000		4000	1000	Salaries, fringe, etc.
Marketing	5000		4000	1000	Bus schedules, posters, ad buys, etc.
Office Supplies	600		480	120	Postage, copying etc.
Totals	\$105,000		68,625	36,375	\$12,000 per county match request

2014 WYDOT Intercity Bus Grant

- Proposed Routes and Schedules – 116-day season
 - Five routes; 628 daily miles eligible for reimbursement
 - To win bid, Linx providers would need to have larger capacity ADA-compliant buses available
 - Tickets to be sold online by overall route, not by segment
- Budget Features
 - \$285,310 total project cost (w/o YNP employee service)
 - \$192,006 funding request
 - \$93,304 in required matching funds
 - 20 Gateway Partners @ \$2,500 = \$50,000
 - \$38,000 in special grants and contributions

Total Ridership Peaked at 350/wk

2905 Boardings over 119 Days



Initiative 2 – An Integrated, Regional Recreational Trails Network

- Gaps in non-motorized network total 59 miles to connect Jackson to West Yellowstone
- Cost estimates range from \$1.2M to \$29.5M
 - Teton Pass to ID/WY State line (6 mi)
 - Driggs to Teton (6 mi)
 - Ashton to Warm River (5 mi)
 - Warm River to Montana Line (30 mi) –
 - Montana Line to West Yellowstone (12 mi)

Initiative 2 – Other Recommendations

- Coordinate with all counties and agencies on accommodating electric bikes, snow bikes and emerging, trail-oriented sports
- Coordinate in design of multi-modal hubs
- Promote destination snowmobile and Nordic packages for the 4-county region
- Design multi-modal travel itineraries and packages for youth; international travelers

Complete Streets Assessment

Joe Gilpin's Recommendations for Driggs:

- Supportive of a joint Teton County, Driggs & Victor Transportation Plan
- Supportive of Driggs passing an official *Complete Streets Policy*
- Comments re: training courses to address poor bicyclist behavior

Initiative 3 – Collaborative Marketing of Multi-Modal Transportation

- Promote Driggs Geotourism & Transit centers
- Marketing strategies for building regional awareness and support of public transit
- Ridership figures and projected demand; defining the rider “archetype”
- Plans to update “one-stop” online trip planning and ticketing systems available to public transit providers in three states

Toll-Free Help Line – 877-454-5469

Call types	1550	
General park and bus questions	722	47%
Schedule Questions	559	36%
Noted as employees	85	5%
RVers	34	2%
Hiker/Biker	58	4%
Airport questions or destinations	90	6%
ADA questions	2	0%

Initiative 4 – Partnership for Energy-Efficient, Low-Emission Travel

- Yellowstone-Teton Clean Energy Coalition (YTCEC) programs for expanding use of alternative fuels and electric/hybrid vehicles
- Regional incentives for carpooling, ride-sharing, wider use of “We-Cars”
- Idle-free policies; educational programs for commercial drivers and government fleets

Scenario Planning Tool & Next Steps

- Katie Wilson, ISU Master's Student, has developed the project's Interactive Map
- Please review final draft of M2 Plan as chapters are posted through January
- Consider FY 2015 match commitment of \$1,500 for midday Rexburg-Jackson route
- Gateway Partner - \$2,500 commitment for 2014 Yellowstone Gateway Connections

For More Information on RPSD

- Visit www.sustainableyellowstone.org
- 2014 HFWC meetings to be focused on IP Caldera Resource Assessment/Futures Study
- Consortium Summit planned for May 2014
- Contact Jan Brown, Special Projects Manager for Fremont County Planning & Building at:
 - jabrown@co.fremont.id.us
 - 208-624-4643 office; 559-3125 cell (1-26-14)

February 18 – Project Launch in Rexburg

- History of the National Monument Discussion
 - Jim Caswell, BLM Director under Bush Administration
 - Steve Woodruff, National Wildlife Federation – Missoula Office
 - Other regional conservation speaker(s)
- Overview of Anticipated, Independent Research - \$150,000 budgeted
- WIRE Project Meeting Topics and Approach
- Recruit Subcommittee Members; Discuss Travel Support Grants
- Finalize Meeting Schedule and Locations

Rest of Proposed 2014 Schedule

March 11 – Island Park	Winter Recreation
April 8 – Ashton	Land Use/Land Management Analysis
May 13 – Rexburg	Water Management and Aquatic Resources
June 10 – Island Park	Built Environment/Public Works & Infrastructure
July 8 – Ashton	Summer Recreation/Transportation Issues
Aug. 12-13 – Island Park	Terrestrial Resources – Timber, Range, Wildlife
Sept. 9 – Ashton	Cultural & Historic Values/Community Vitality
October 14 – Rexburg	Open Date if Needed
November 18 – Ashton?	Annual Conference – Final Recommendations